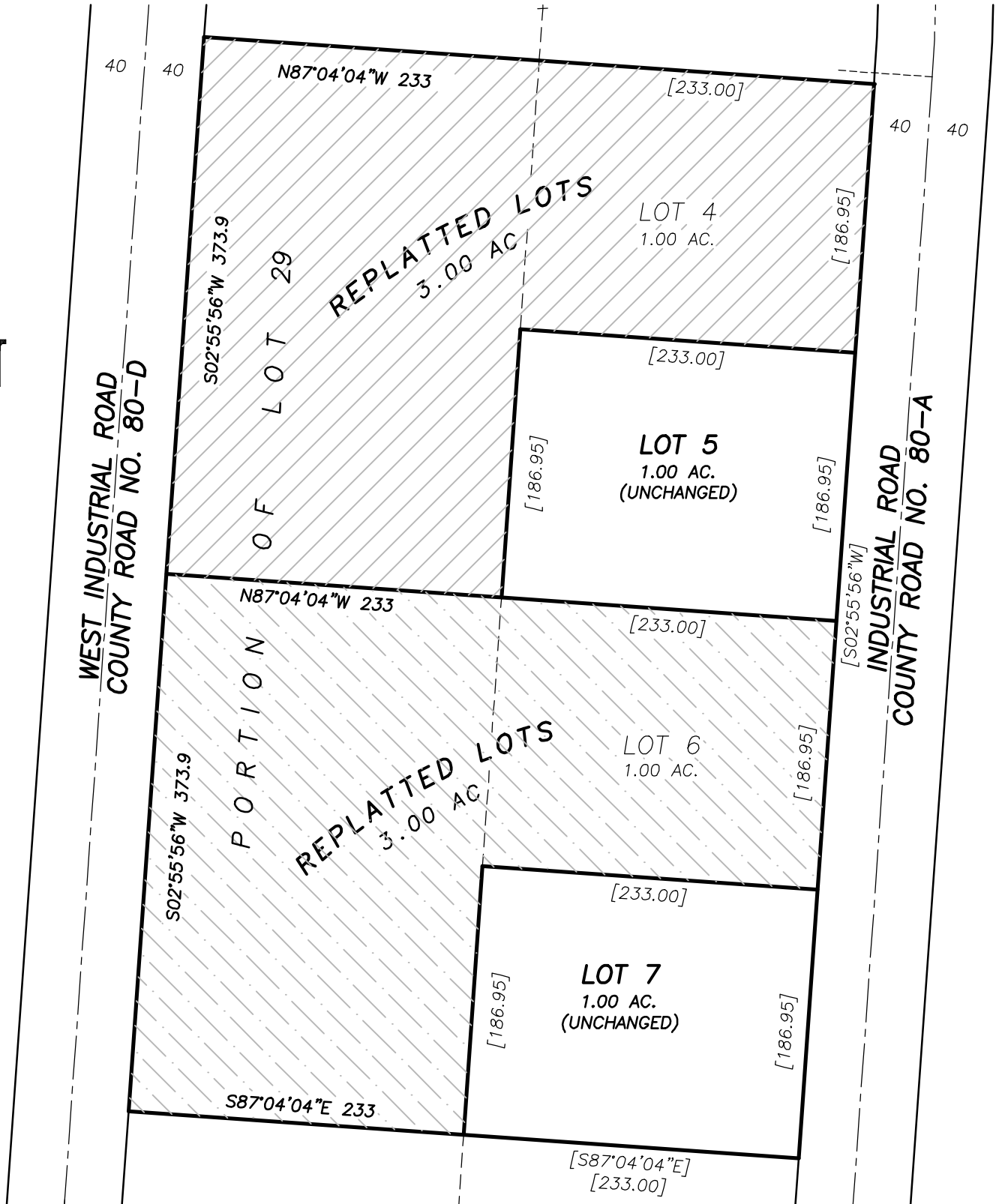


# PRELIMINARY MAP

A REPLAT OF LOTS 4, 5, 6, 7 & A PORTION OF LOT 29 OF GRANT COUNTY AIRPORT INDUSTRIAL PARK SUBDIVISION



PREPARED FOR: THE CITY OF JOHN DAY

PREPARED BY: BENCHMARK LAND SURVEYING, INC.

217 N. CANYON BLVD.  
JOHN DAY, OR 97845  
(541) 575-1251

DATE: 9/6/2021

SCALE: 1" = 100'