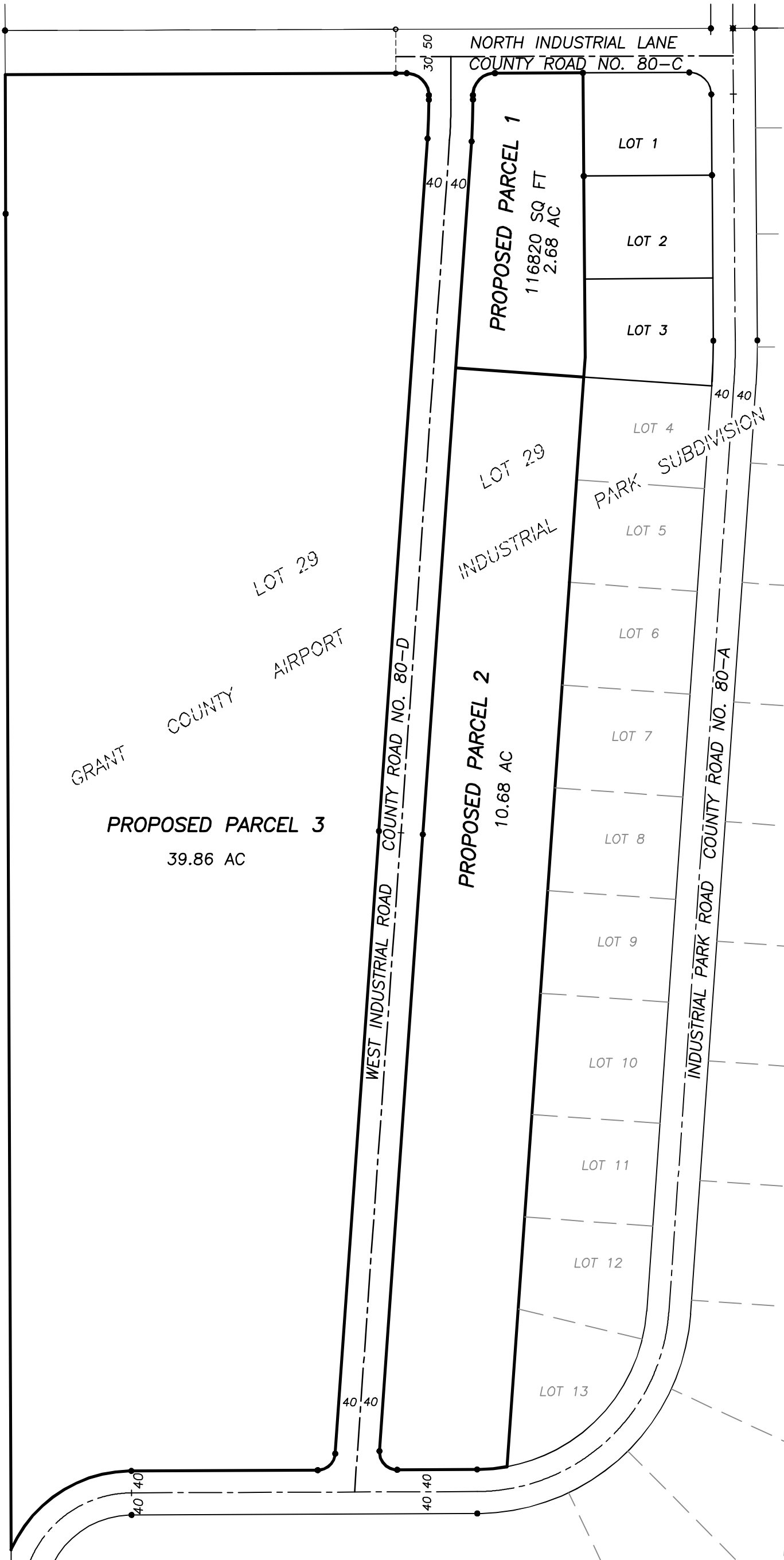


PRELIMINARY LAND PARTITION PLAT

LOT 29 OF GRANT COUNTY AIRPORT INDUSTRIAL PARK SUBDIVISION SITUATED IN
THE E1/2 SEC. 27, T.13S., R.31E., W.M.,
JOHN DAY, GRANT COUNTY, OREGON

SCALE: 1" = 200'



PREPARED BY: BENCHMARK LAND SURVEYING, INC.
217 N. CANYON BLVD.
JOHN DAY, OR 97845
(541) 575-1251
JULY 9, 2021