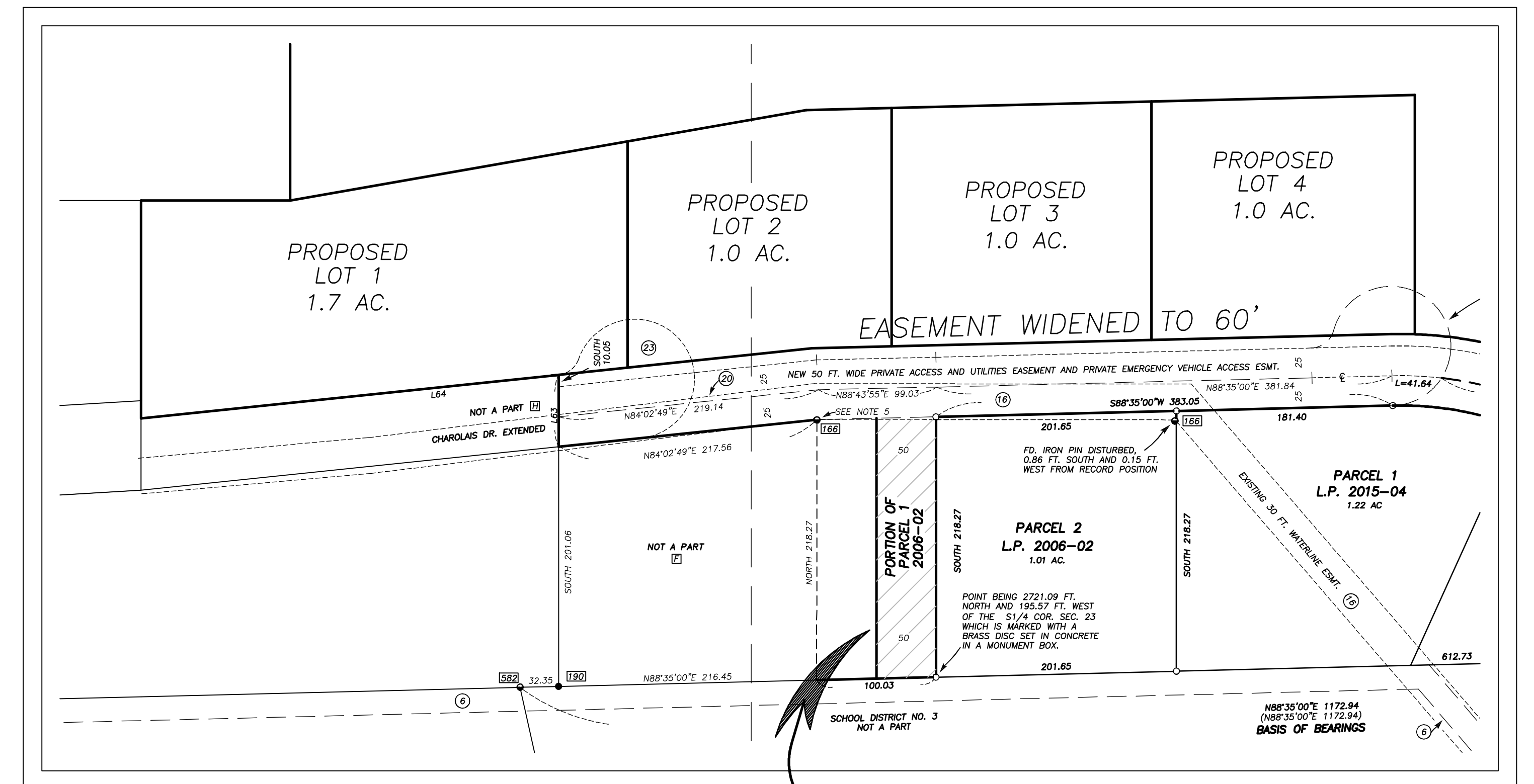


# PRELIMINARY MASTER PLAN

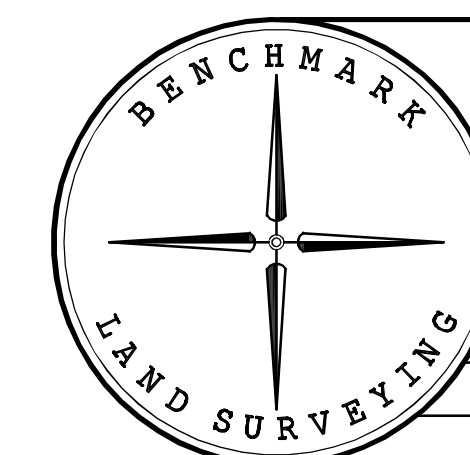
A PORTION OF PARCEL 1 OF LAND PARTITION NO. 2006-02  
SITUATED IN SECTION 23, T.13S., R.31E. W.M.,  
GRANT COUNTY, OREGON



DETAIL  
SCALE: 1"=100'



A PORTION OF PARCEL 1 OF  
LAND PARTITION 2006-02 THAT  
WILL BE ISOLATED FROM THE REMAINDER  
PARCEL 1: 0.25 ACRE



BENCHMARK LAND SURVEYING  
217 N. CANYON BLVD. JOHN DAY, OREGON  
541-575-1251 • benchmarkls.com

PRELIMINARY MASTER PLAN  
A PORTION OF PARCEL 1 OF LAND PARTITION NO. 2006-02  
SITUATED IN SECTION 23, T.13S., R.31E. W.M.,  
GRANT COUNTY, OREGON

SURVEYED FOR	CITY OF JOHN DAY	
DRAWN BY:	MCS	07/03/2021
SCALE:	1"=200'	

