

THE RIDGE MASTER PLAN

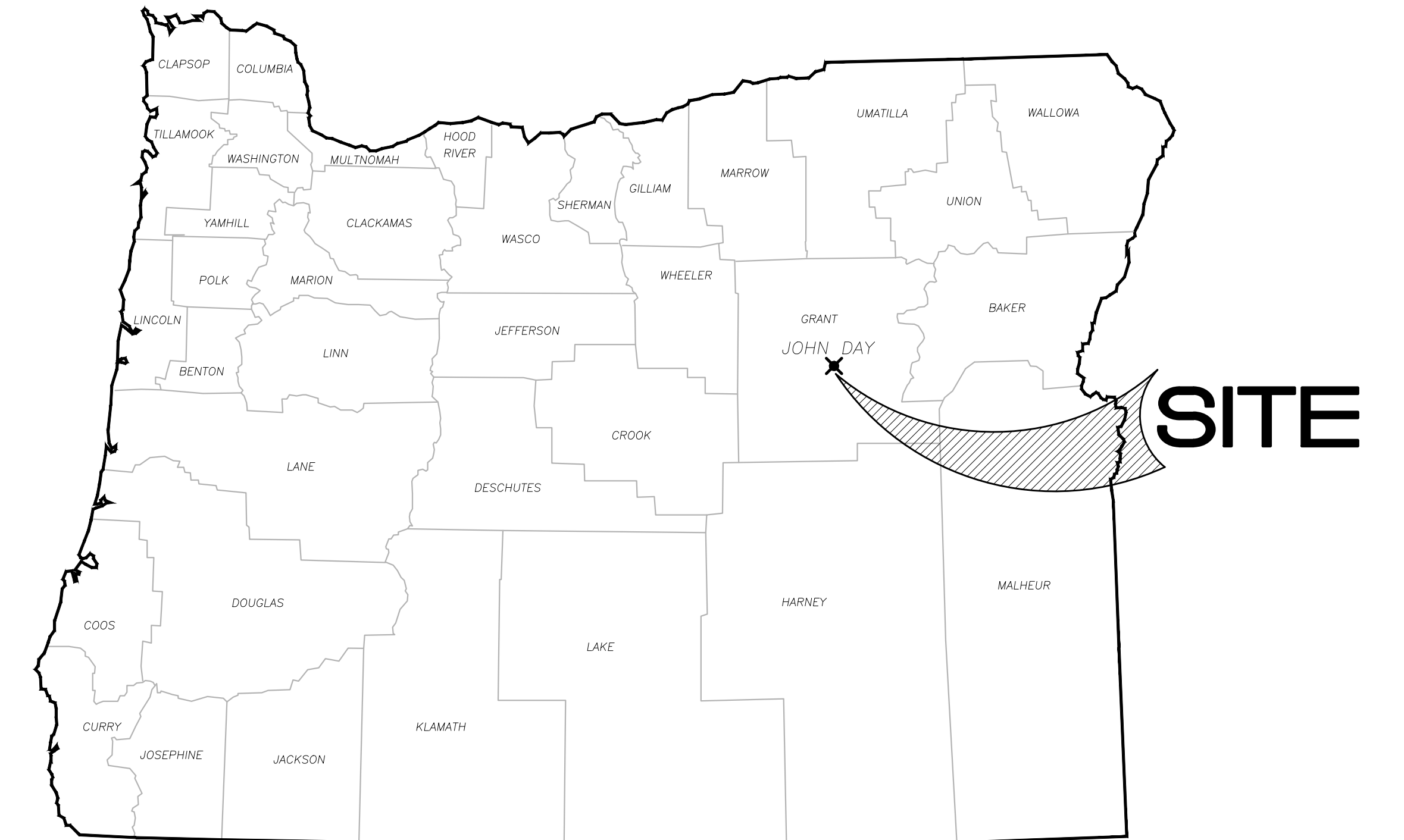
OWNER:

MAHOGANY RIDGE PROPERTIES LLC

314 A AVENUE
SENECA, OR 97873
CONTACT: JOSH WALKER
PH: 541-620-2992



SITE MAP
FROM GOOGLE MAPS
NTS



OREGON VICINITY MAP

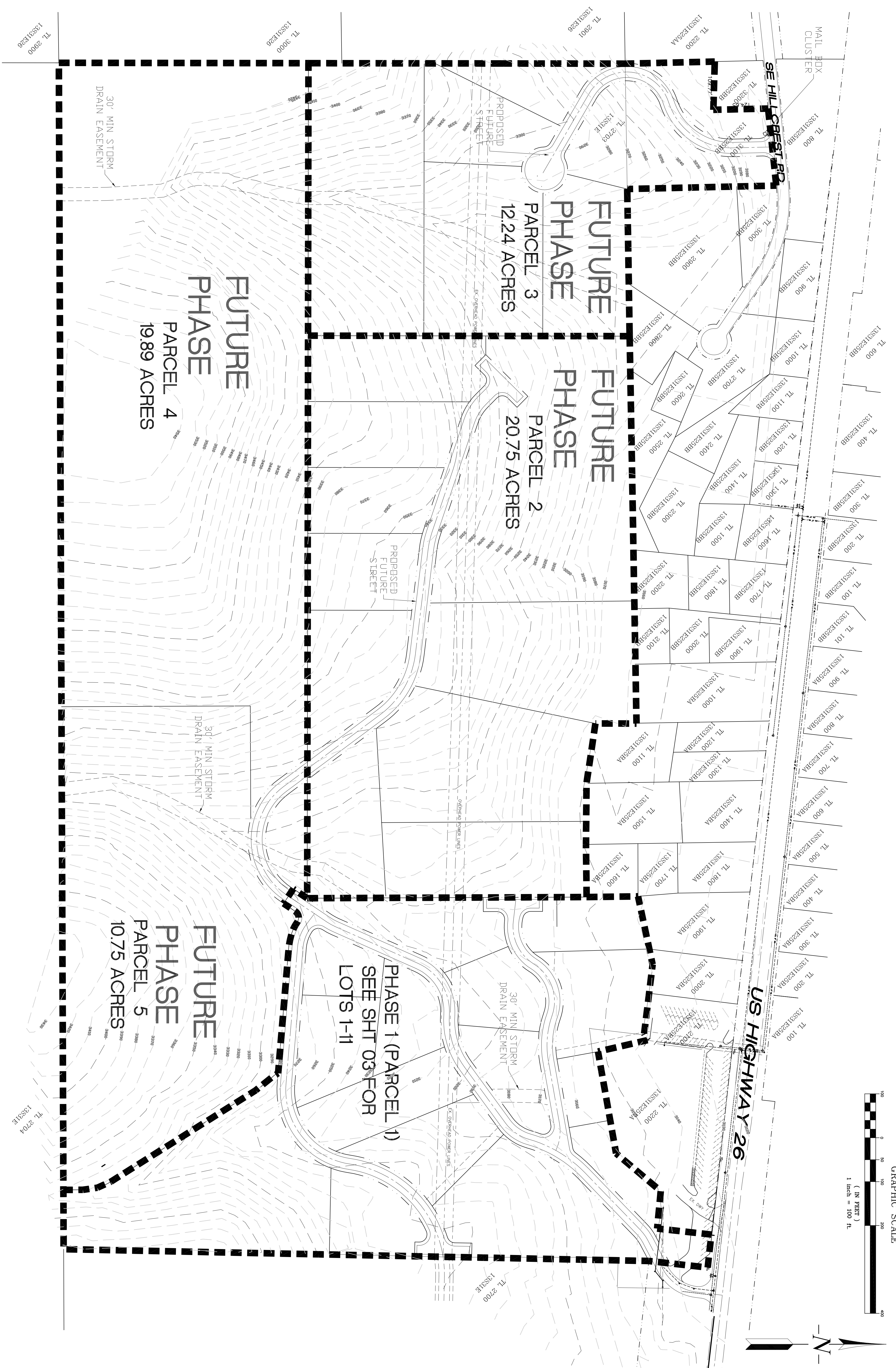
INDEX

SHEET	DESCRIPTION
01	COVER
02	EX. SITE CONDITIONS
03	CONCEPT PLAN OVERVIEW
04	PRELIMINARY PLAT PHASE 2 PLAN VIEW
04	PRELIMINARY PLAT PHASE 2 TYP. ST. PROFILE AND SECTION

MOST RECENT REVISION TO
THIS SET OF PLANS:

SISUL ENGINEERING
158 E. MAIN STREET
JOHN DAY, OR. 97845
(541) 575-3777

MAY, 2021



GRAPHIC SCALE
(IN FEET)
1 inch = 100 ft

