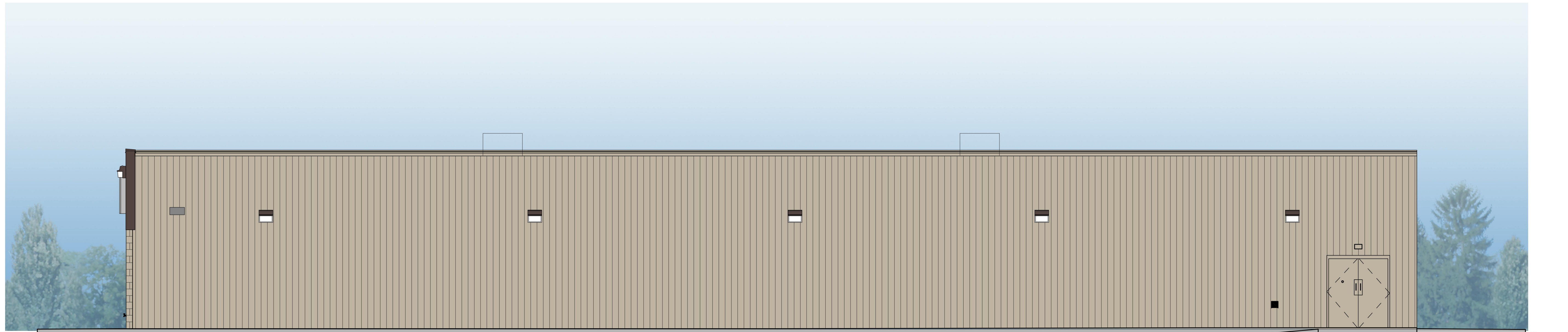




1 NORTH ELEVATION  
A-2 3/16" = 1'-0"



3 WEST ELEVATION (TRUCK SIDE)  
A-2 3/16" = 1'-0"

**DOLLAR GENERAL**

DOLLAR GENERAL

THE COLORS SHOWN IN THIS RENDERING ARE CLOSE APPROXIMATIONS. DUE TO INK VARIATIONS AND DIFFERENCES IN PRINTER, AND EXACT COLOR MATCH CANNOT BE ACHIEVED. THE VIEWER IS ADVISED TO USE THE RENDERING AS A GUIDELINE FOR THE ARRANGEMENT OF COLORS ON THE BUILDING, AND TO THEN REFER TO THE ACTUAL COLOR OR MATERIAL SAMPLES PROVIDED.



Glaus, Pyle, Schomer, Burns & DeHaven, Inc.  
1.800.955.4731  
www.gpdgroup.com