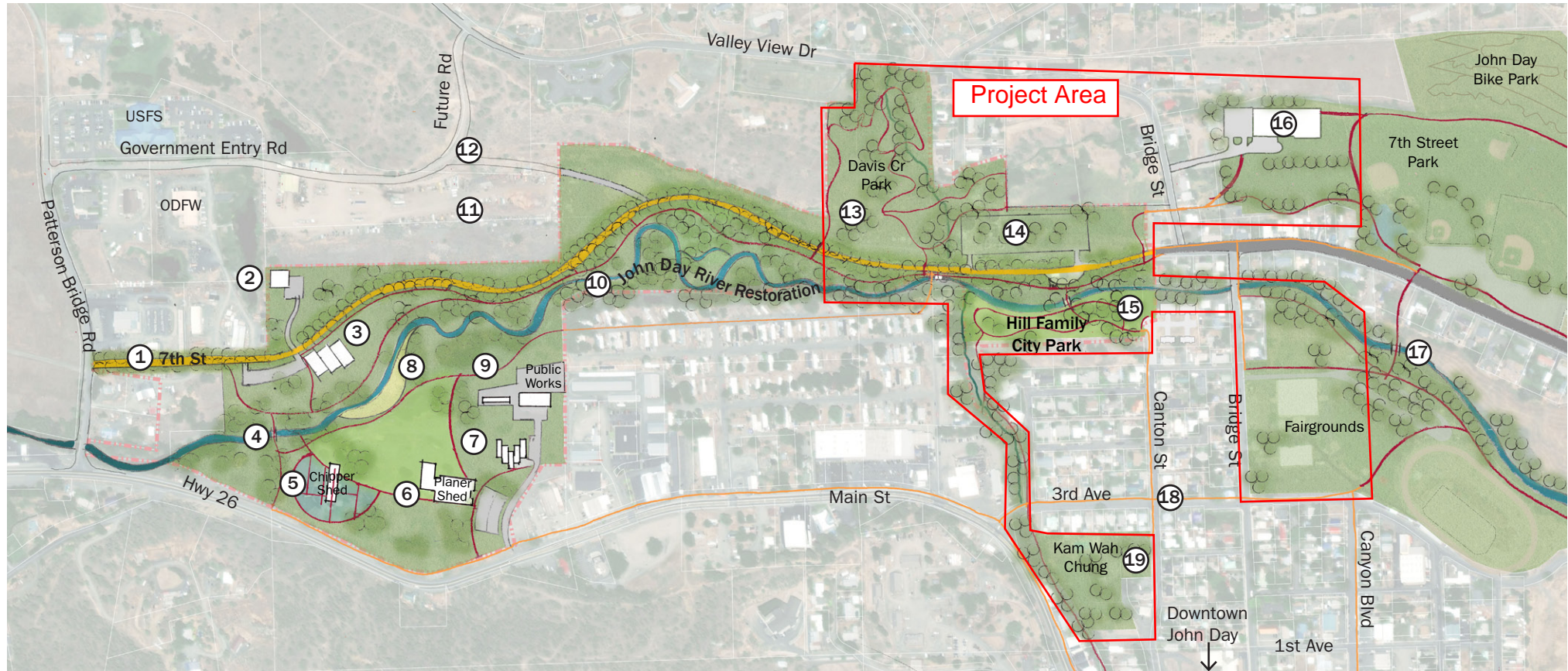


VICINITY LOCATION MAP



- ① Extend 7th St between Patterson Bridge Rd and Bridge St, including grading, paving, planting, lighting, street furnishings, striping, parking pockets, utilities, signage
- ② New Wastewater Treatment Plant: Paving, parking lot, building, pathways, utilities
- ③ Offices: Build offices and associated site work
- ④ Redeck and upgrade bridge for pedestrian / bicycle access and utility extensions
- ⑤ Water Garden: Create a welcoming focal point for western edge of city, including renovation of Chipper Shed, boardwalks/pathways, planting, reclaimed water for irrigation, lighting, signage, furnishings
- ⑥ Event Area: Create a community gathering space in and around the existing Planer Shed, including renovation of Planer Shed, parking lot, pathways, event lawn, grading, utilities, lighting, loading dock, access roads
- ⑦ Greenhouses: Build hydroponic greenhouses, including parking lot, building, pathways, utilities, signage, extend reclaimed water supply to greenhouses
- ⑧ Beach: Create a beach for swimming / tubing / small boats, including new plantings, pathways and gathering space
- ⑨ Trail system (red lines): Connect the Oregon Pine / Innovation Gateway Site to other destinations in John Day, including grading, paving, planting, signage, striping, crossings, furnishings, walls, fences, railings, multi-modal bridges, lighting
- ⑩ John Day River Restoration: Restore the John Day river to provide habitat, recreation, and flood storage, including current wastewater ponds. Requires geotechnical, environmental and engineering analysis.
- ⑪ Potential property acquisition for future development
- ⑫ Road Connections: Connect 7th St to Government Entry Rd and Valley View Dr with new multi-modal streets
- ⑬ Davis Creek Park: Trails, multi-modal bridge, site work
- ⑭ Campground: Camping facilities & associated site work
- ⑮ Hill Family City Park: Build new riverfront park, including restrooms, trails, furnishings, planting, grading, multi-modal bridge, lighting, and reclaimed water for irrigation
- ⑯ Aquatic Center: Buildings, utilities, plantings, parking lot and other site work
- ⑰ Pedestrian / bicycle bridge
- ⑱ On Street Pedestrian Connections (orange lines): Link trails and destinations with sidewalk and crossing improvements
- ⑲ Kam Wah Chung: OPRD upgrades, land exchange, demolish old city pool