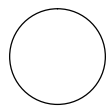


**FLOOR PLAN**  
1/8" = 1'-0"




○ NORTH ELEVATION  
 3/16" = 1'-0"

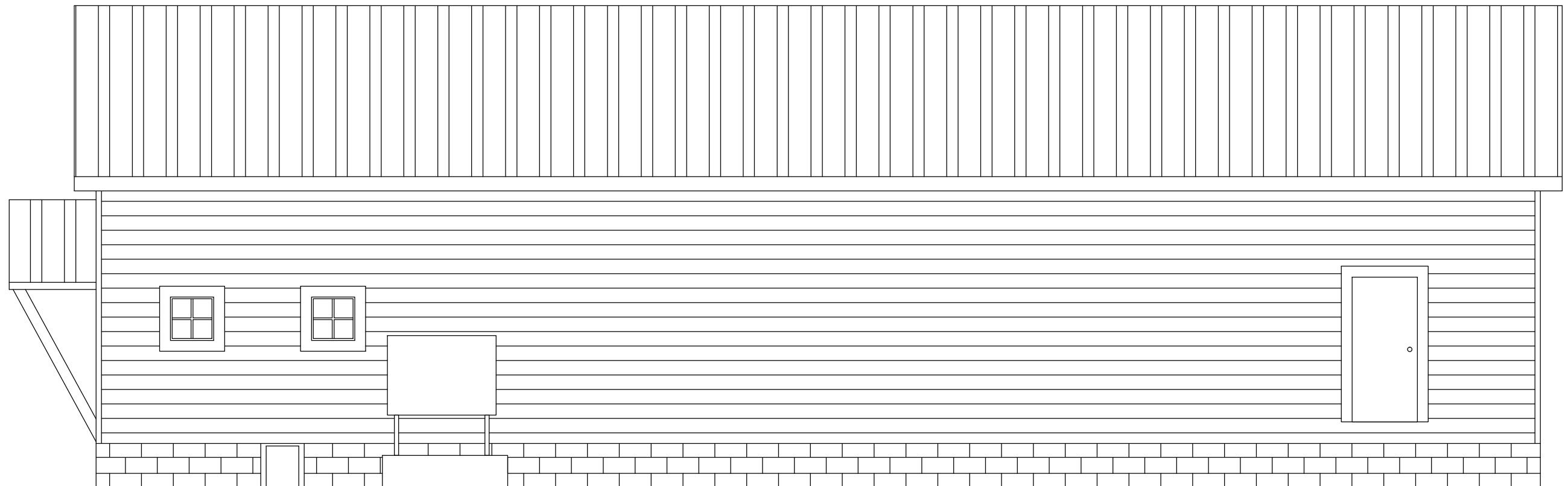


**EAST ELEVATION**

3/16" = 1'-0"



○ WEST ELEVATION  
3/16" = 1'-0"



○ SOUTH ELEVATION  
3/16" = 1'-0"