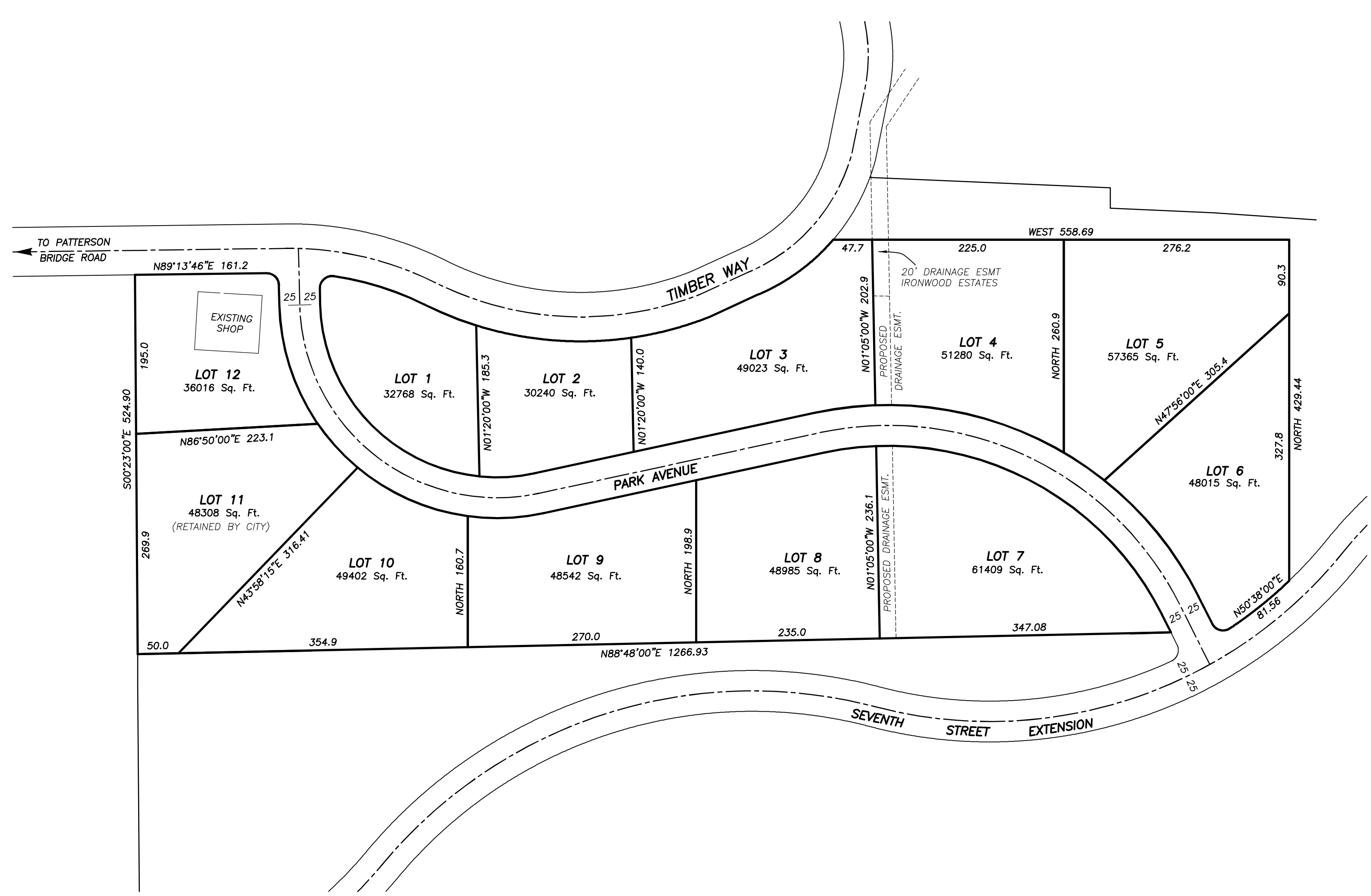
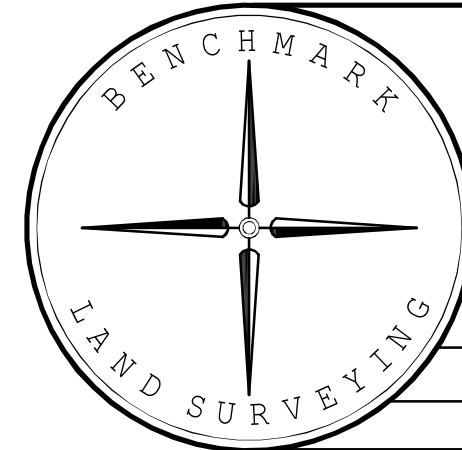


# JOHN DAY INNOVATION GATEWAY BUSINESS PARK PRELIMINARY PLAT

A PORTION OF TAX LOT 2700, TAX MAP 13S31E22D  
SITUATED IN THE SE1/4 SECTION 22, T.13S., R.31E., W.M.,  
CITY OF JOHN DAY, GRANT COUNTY, OREGON



NOTE: THE BEARING, DISTANCES AND AREAS SHOWN  
HEREON MAY CHANGE UPON THE EXECUTION OF  
THE FINAL SURVEY.



**BENCHMARK LAND SURVEYING**  
217 N. CANYON BLVD. JOHN DAY, OREGON  
541-575-1251 ~ benchmarkls.com

PRELIMINARY PLAT FOR THE JOHN DAY INDUSTRIAL PARK  
A PORTION OF TAX LOT 2700, TAX MAP 13S31E22D  
SITUATED IN THE SE1/4 SECTION 22, T.13S., R.31E., W.M.,  
CITY OF JOHN DAY, GRANT COUNTY, OREGON

PREPARED FOR	CITY OF JOHN DAY	
PREPARED BY	MCS	11/30/2022
SCALE: 1"=100'	DRAWN BY: MCS	