

REVISIONS	BY
EXCAVATION FOR MSE WALL	GB

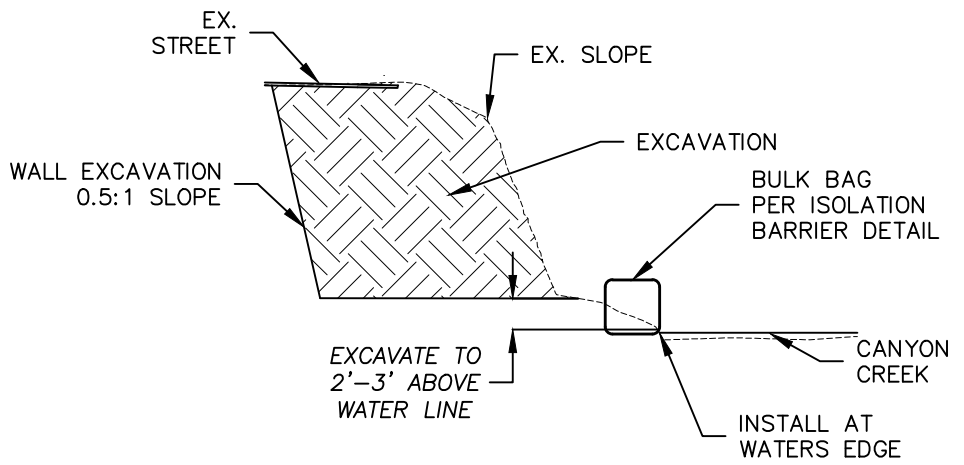
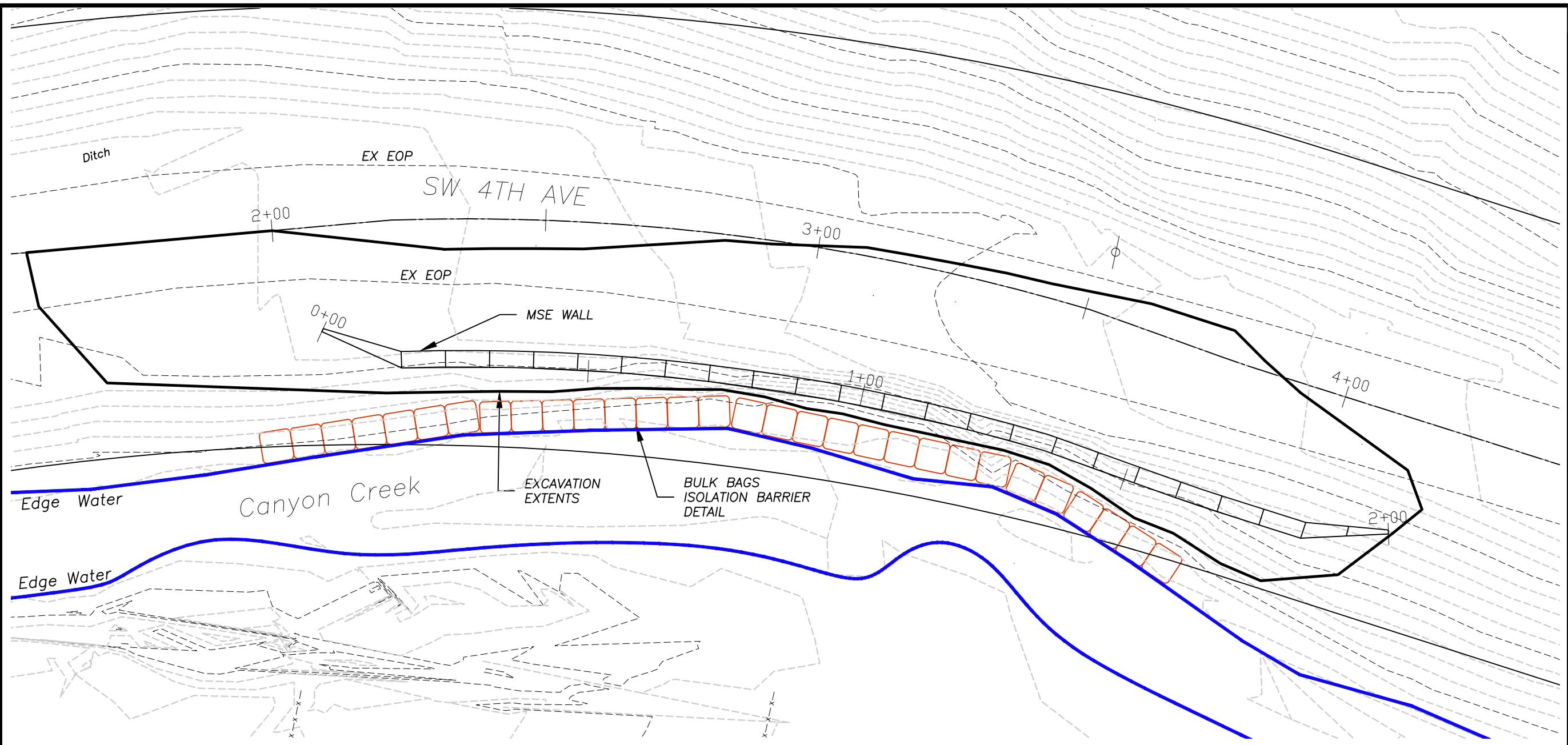
SW 4TH AVENUE  
ROAD RECONSTRUCTION  
CITY OF JOHN DAY

**SISUL ENGINEERING** EXCAVATION PLANS  
158 E. MAIN STREET  
JOHN DAY, OREGON  
(541) 575-3777

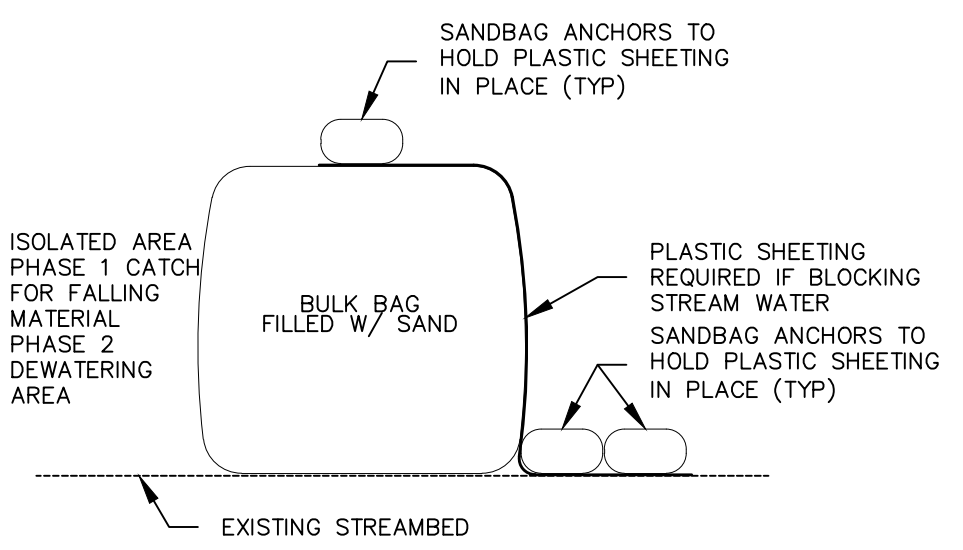
DATE	JUNE 2022
SCALE	NOTED
DRAWN	GB
JOB	21-041
SHEET	<b>01</b>
OF	03 SHEETS

PERMIT CUT/ FILL BELOW OHW LEVEL	
CUT	FILL
41.3 CY	39.9 CY

48 HRS. PRIOR TO ANY CONSTRUCTION  
THE CONTRACTOR IS TO CALL FOR  
LOCATION OF UTILITIES  
**1-800-332-2344**



**PHASE 1 EXCAVATION SECTION VIEW**  
NTS



**ISOLATION BARRIER DETAIL**  
NTS

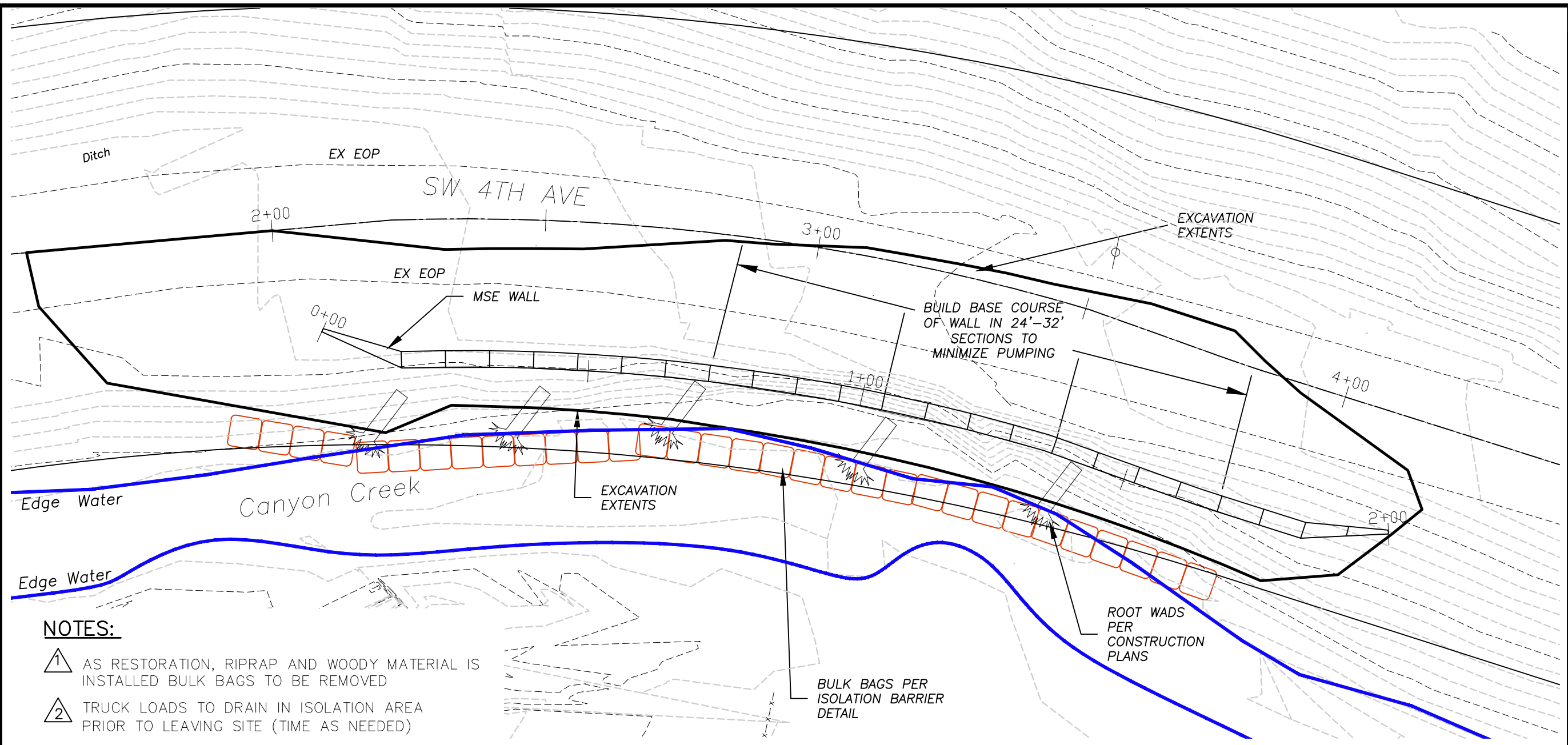
REVISIONS	BY

**EXCAVATION PLAN PHASE 1**  
**SW 4TH AVENUE ROAD RECONSTRUCTION**  
 CITY OF JOHN DAY

**SISUL ENGINEERING**  
 158 E. MAIN STREET  
 JOHN DAY, OREGON  
 (541) 575-3777

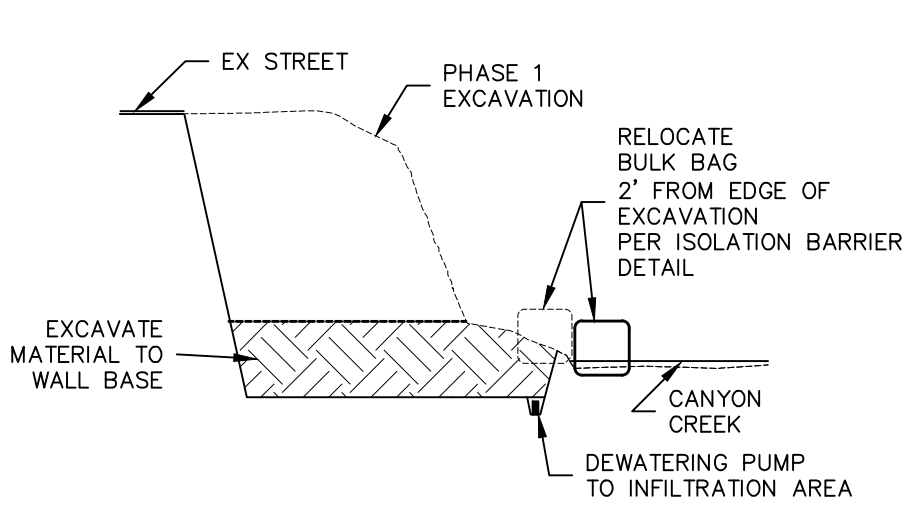
DATE JUNE 2022  
 SCALE NOTED  
 DRAWN GB  
 JOB 21-041  
 SHEET **02**  
 OF 03 SHEETS



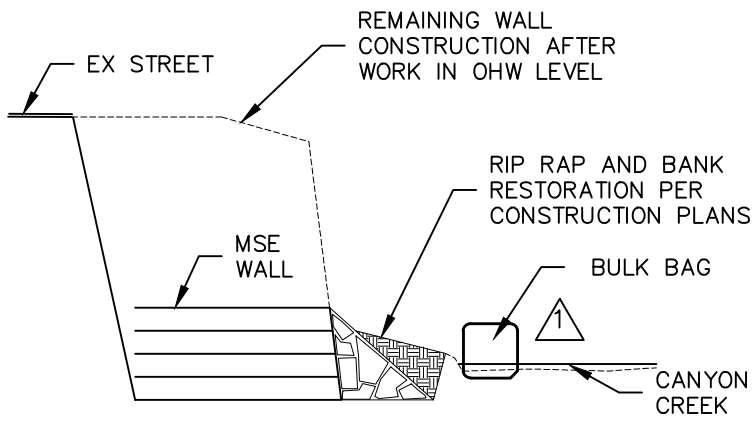


**NOTES:**

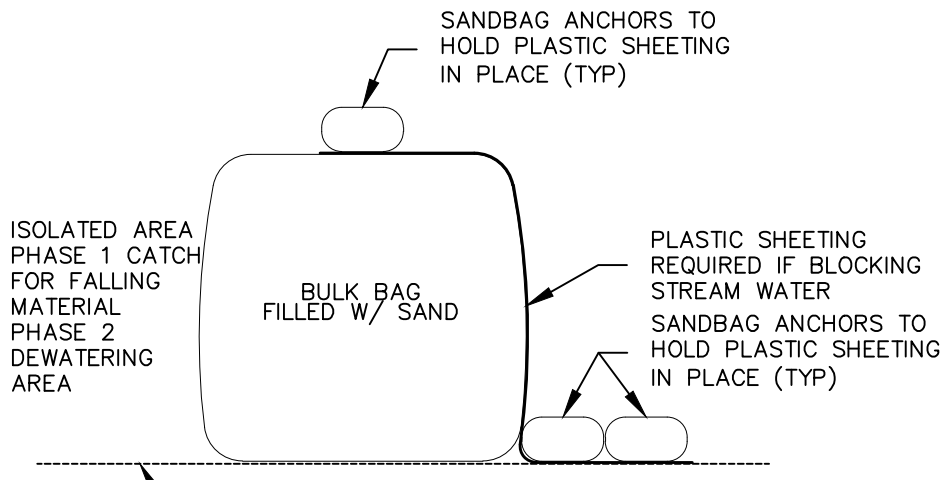
- 1 AS RESTORATION, RIPRAP AND WOODY MATERIAL IS INSTALLED BULK BAGS TO BE REMOVED
- 2 TRUCK LOADS TO DRAIN IN ISOLATION AREA PRIOR TO LEAVING SITE (TIME AS NEEDED)



**PHASE 2 EXCAVATION SECTION VIEW**  
NTS



**PHASE 3 WALL CONSTRUCTION SECTION VIEW**  
NTS



**ISOLATION BARRIER DETAIL**  
NTS

REVISIONS	BY

**SISUL ENGINEERING** EXCAVATION PLAN SW 4TH AVENUE  
 PHASE 2 ROAD RECONSTRUCTION  
 AND PHASE 3 CITY OF JOHN DAY

**SISUL ENGINEERING**  
 158 E. MAIN STREET  
 JOHN DAY, OREGON  
 (541) 575-3777

DATE	JUNE 2022
SCALE	NOTED
DRAWN	GB
JOB	21-041
SHEET	<b>03</b>
OF	03 SHEETS