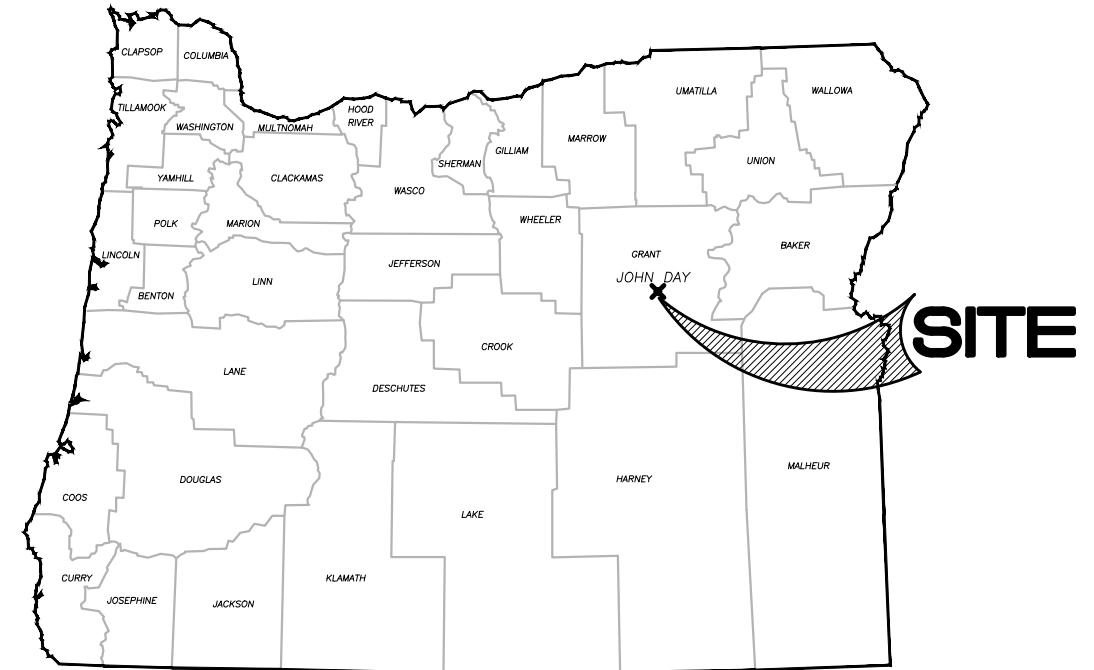


JOHN DAY AQUATIC CENTER DESIGN REVIEW

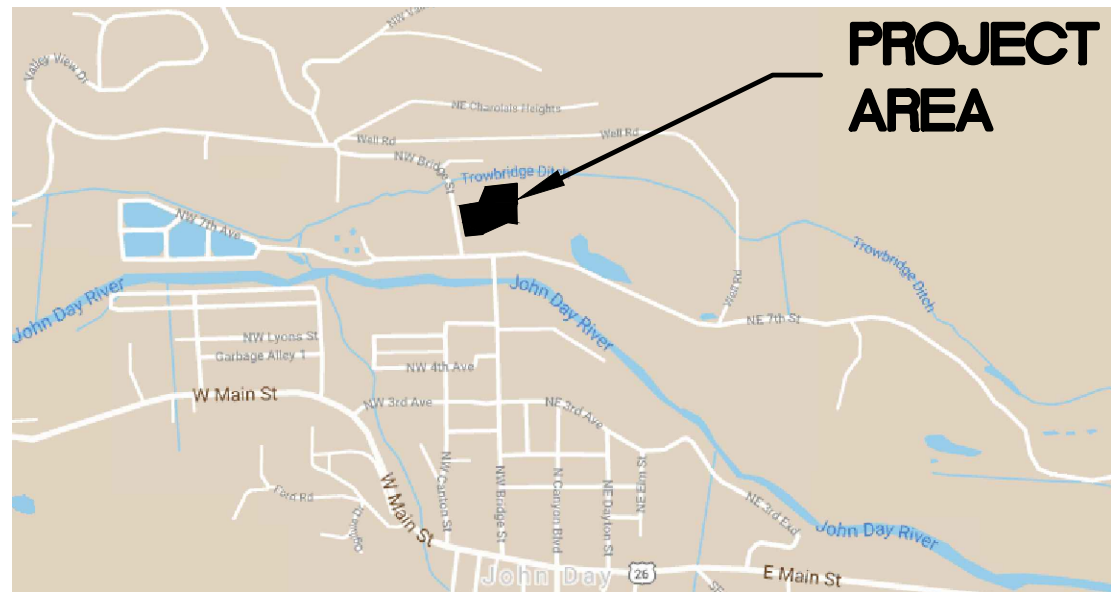
OWNER:

CITY OF JOHN DAY

450 E MAIN ST.
JOHN DAY, OR 97845
CONTACT: NICK GREEN & AARON LIEUALLEN
PH: 541-575-0028

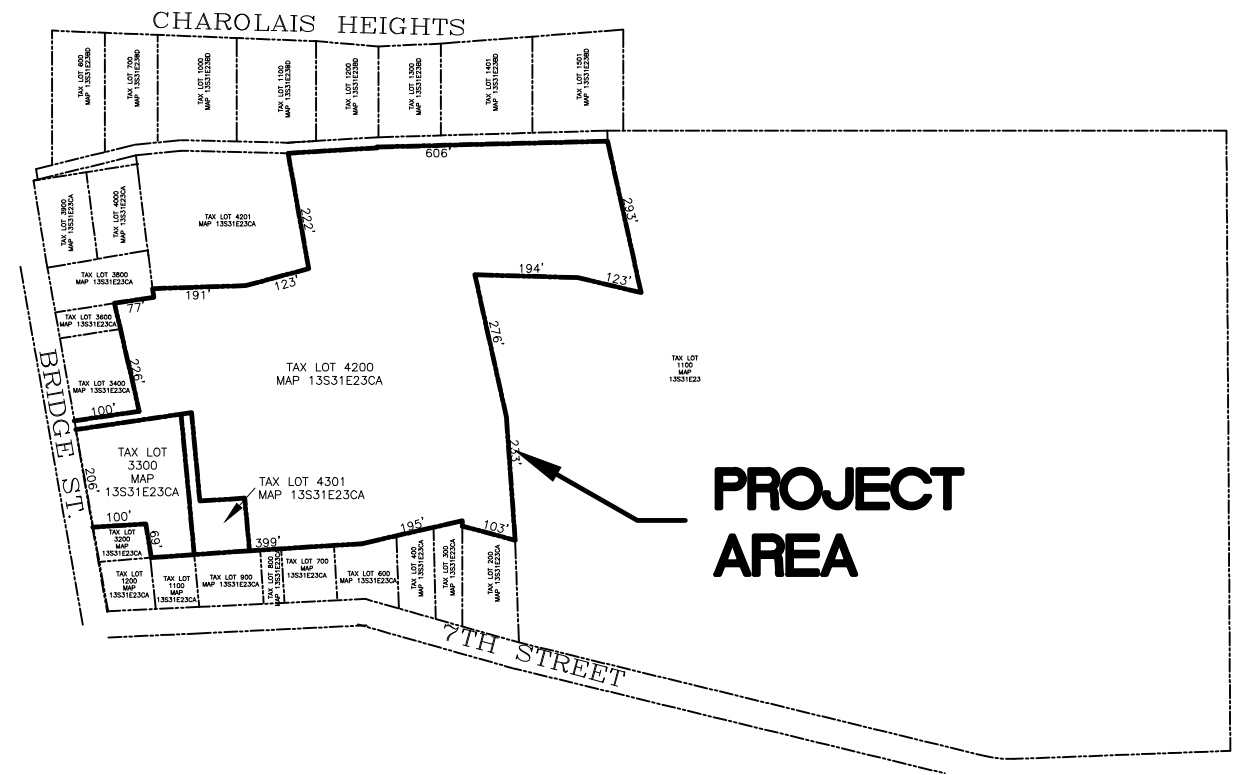


OREGON VICINITY MAP



**PROJECT
AREA**

SITE MAP
FROM GOOGLE MAPS
NTS



**PROJECT
AREA**

TAX MAP AND SURROUNDING LOTS

NTS

SEPT 2021

INDEX

SHEET	DESCRIPTION
01	COVER
02	EX. CONDITIONS
03	PROPOSED SITE IMPROVEMENTS
04	PRELIMINARY GRADING AND STORM PLAN
04	SLOPE MAP

CIVIL ENGINEER
SISUL ENGINEERING
158 E. MAIN STREET
JOHN DAY, OR. 97845
(541) 575-3777

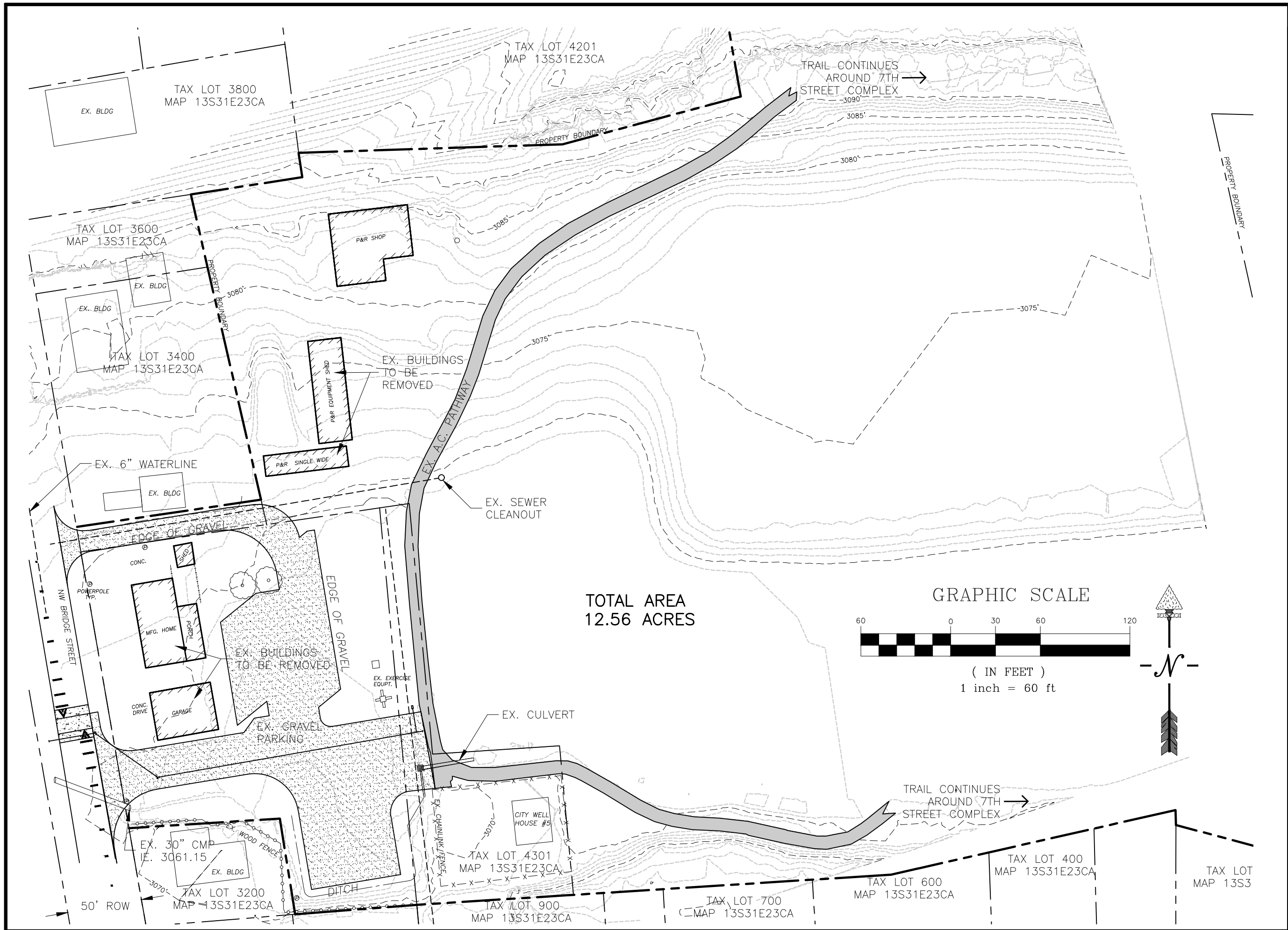
ARCHITECT
OP SIS ARCHITECTURE
920 NW 17TH AVE.
PORTLAND, OR 97209
(503) 525-9511

LANDSCAPE ARCHITECT
WALKER MACY
111 SW OAK ST, SUIT 200
PORTLAND, OR 97204
(503) 228-3122

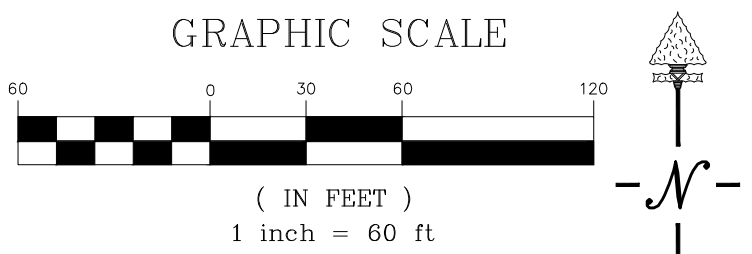
SURVEYOR
BENCHMARK SURVEYING
217 N. CANYON BLVD
JOHN DAY, OR. 97845
(541) 575-1251

MOST RECENT REVISION TO
THIS SET OF PLANS:

9/28/21



TOTAL AREA
12.56 ACRES



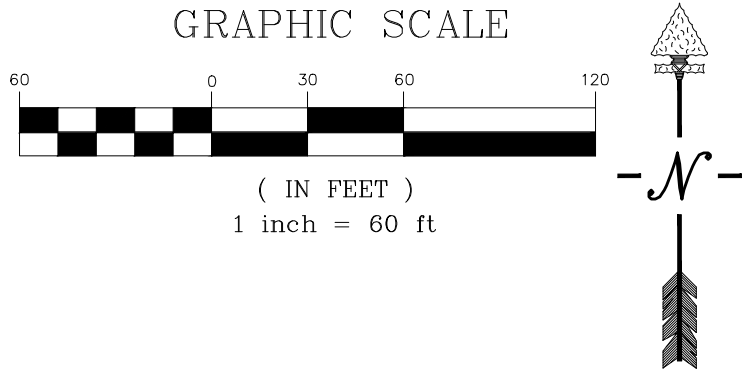
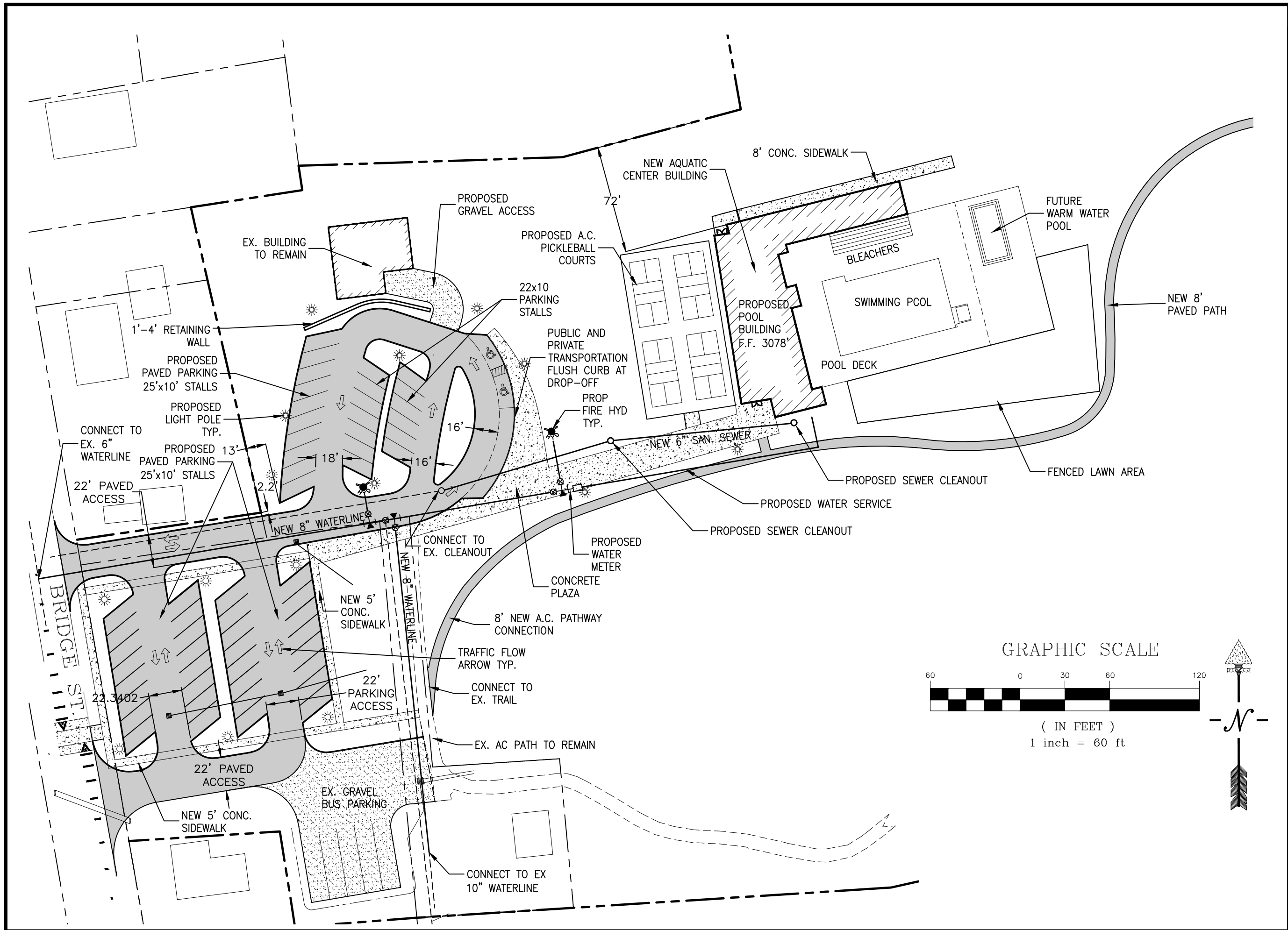
REVISIONS	BY

JOHN DAY
AQUATIC CENTER
DESIGN REVIEW
CITY OF JOHN DAY

EX SITE
CONDITIONS

SISUL ENGINEERING
158 E. MAIN STREET
JOHN DAY, OREGON
(541) 575-3777

DATE	SEPT 2021
SCALE	NOTED
DRAWN	GJB
JOB	XXXX
SHEET	01
OF	03 SHEETS



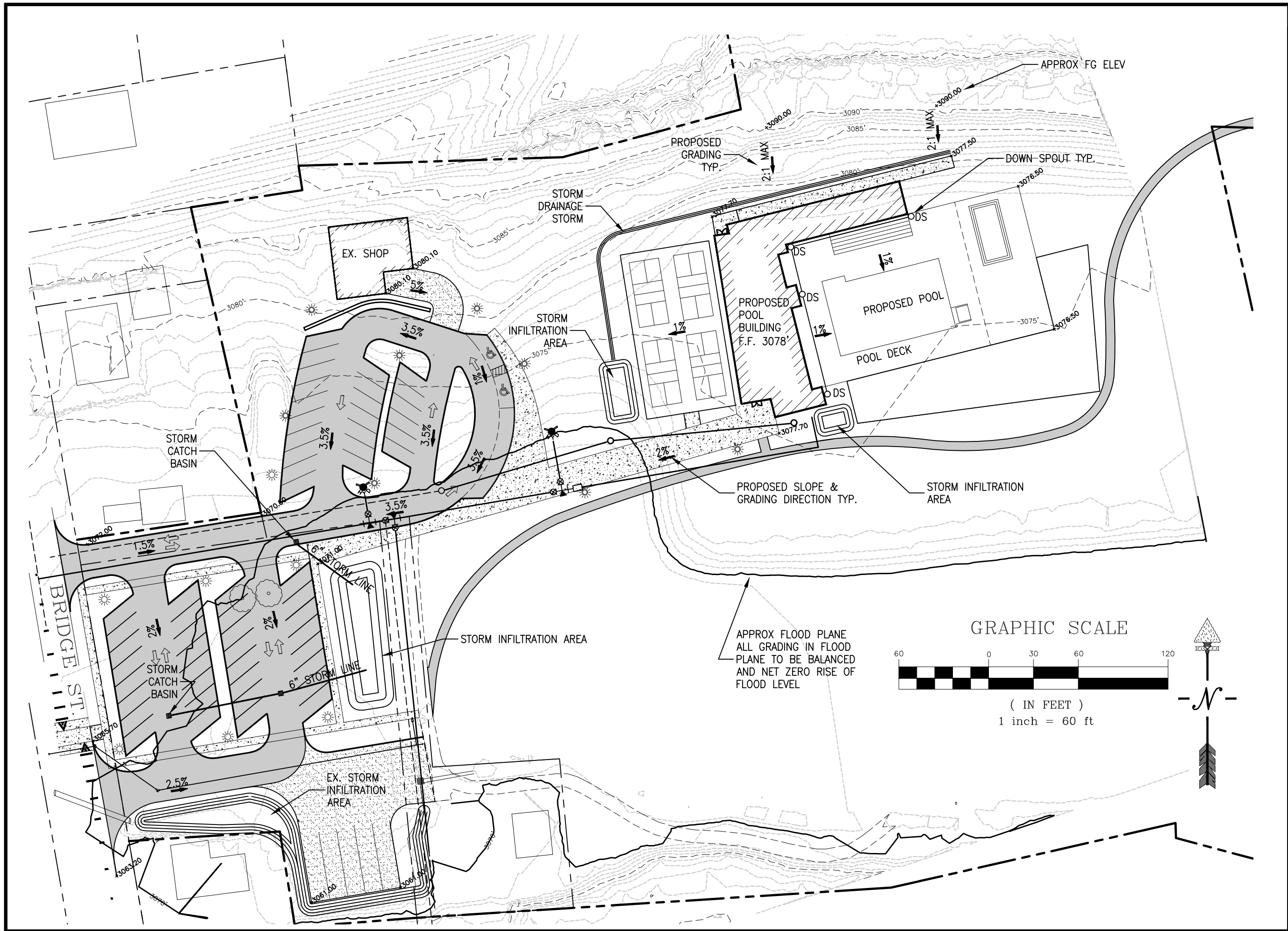
REVISIONS	BY

**JOHN DAY
AQUATIC CENTER
DESIGN REVIEW**
CITY OF JOHN DAY

**PROPOSED SITE
IMPROVEMENTS**

SISUL ENGINEERING
158 E. MAIN STREET
JOHN DAY, OREGON
(541) 575-3777

DATE	SEPT 2021
SCALE	NOTED
DRAWN	GJB
JOB	XXXX
SHEET	02
OF 04 SHEETS	



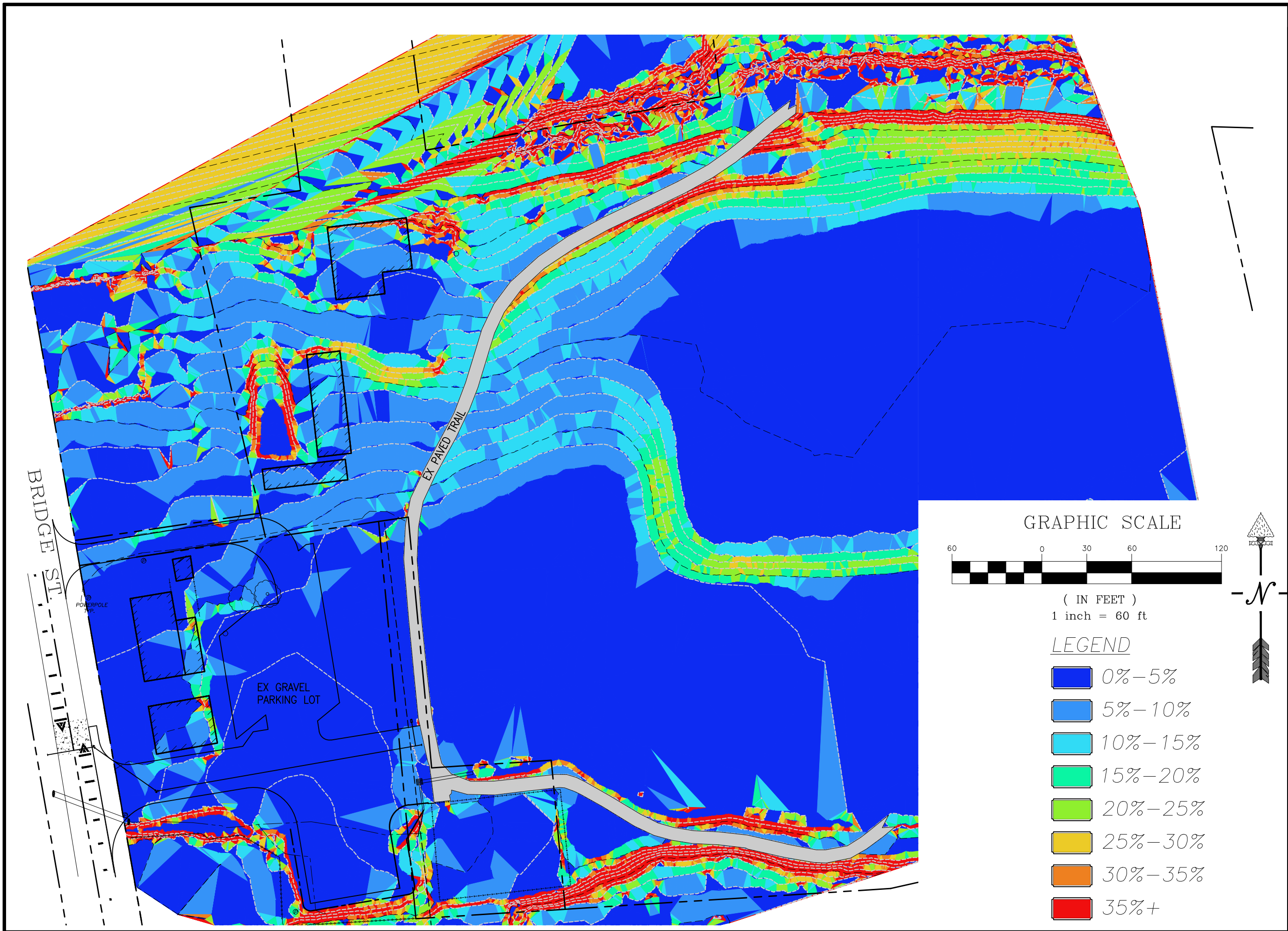
REVISIONS	BY

**JOHN DAY
AQUATIC CENTER
DESIGN REVIEW**
CITY OF JOHN DAY

**PRELIMINARY
GRADING AND
STORM PLAN**

SISUL ENGINEERING
158 E. MAIN STREET
JOHN DAY, OREGON
(541) 575-3777

DATE	SEPT 2021
SCALE	NOTED
DRAWN	GJB
JOB	XXXX
SHEET	03
OF	04 SHEETS



REVISIONS	BY

**JOHN DAY
AQUATIC CENTER
DESIGN REVIEW**
CITY OF JOHN DAY

SLOPE MAP

SISUL ENGINEERING
158 E. MAIN STREET
JOHN DAY, OREGON
(541) 575-3777

DATE	SEPT 2021
SCALE	NOTED
DRAWN	GJB
JOB	XXXX
SHEET	04
OF 04 SHEETS	