

**John Day Innovation Gateway  
Adaptive Water Reuse**  
Attachment 1.1  
Project Area & Lots for Option 1

- Option 1 Project Area
- Tax Lots Associated with Option 1
- Surface Water Monitoring Sites
- Ground Water Monitoring Sites

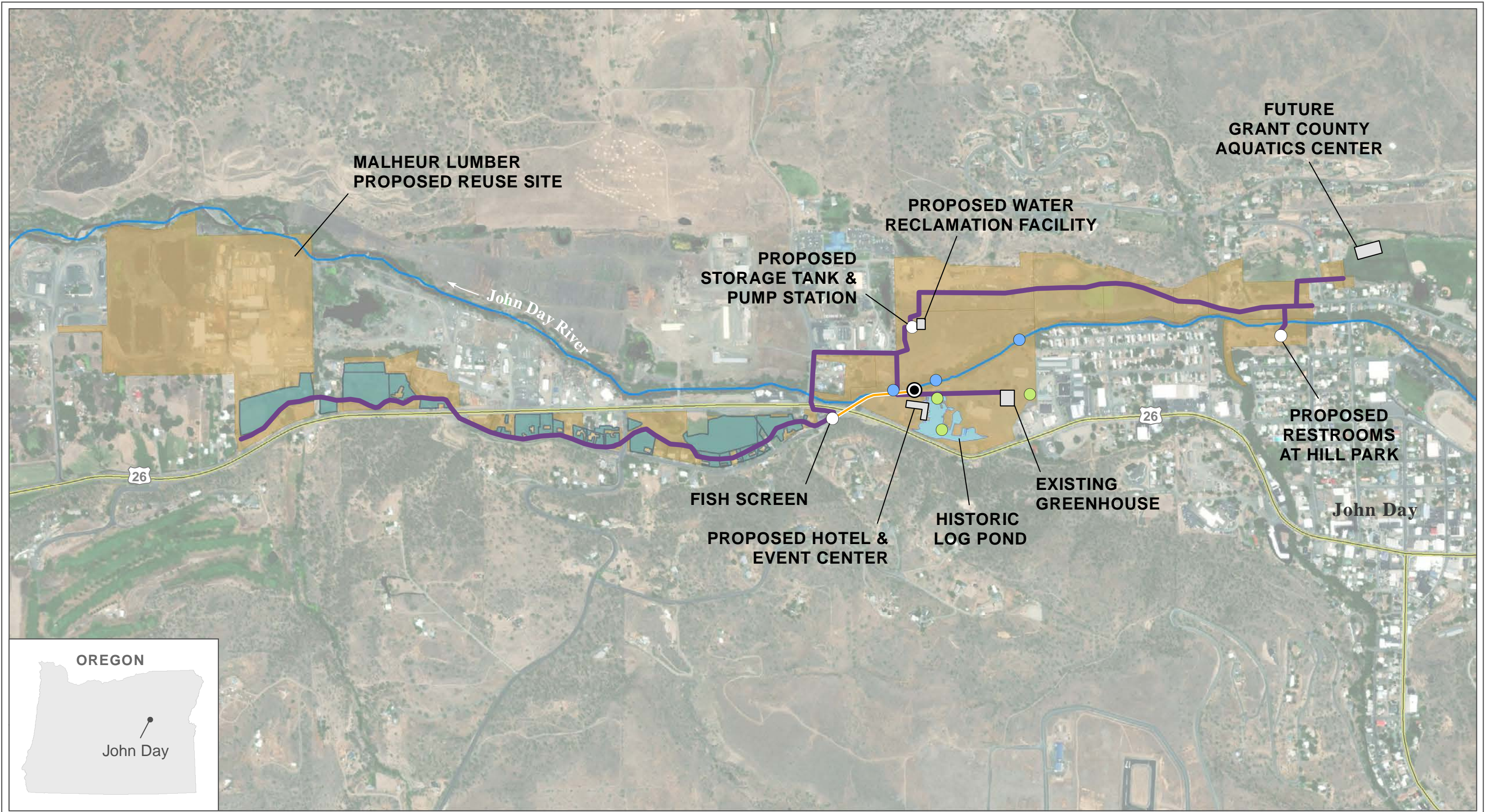
Feet  
0 500 1,000

Lat Long: 44.422431, 118.970325

Credits: City of John Day, Grant County, OWRD, NHD, ODOT, Esri

\*\*\* This map was compiled by FCA as a visualization tool and is not intended for legal purposes. FCA is not liable for any damages caused by omissions or errors in the data displayed herein. Map document name and date: John Day Purple Pipe Option 1 Proj Area & Lots.mxd 4/23/2021 \*\*\*





**John Day Innovation Gateway  
Adaptive Water Reuse**  
Attachment 1.2a  
Project Area for Option 2

- Point of Diversion
- Luce Long Ditch (Piped Section)
- Option 2 Project Area
- Primary Irrigation POUs
- Tax Lots Associated with Option 2
- Surface Water Monitoring Sites
- Ground Water Monitoring Sites

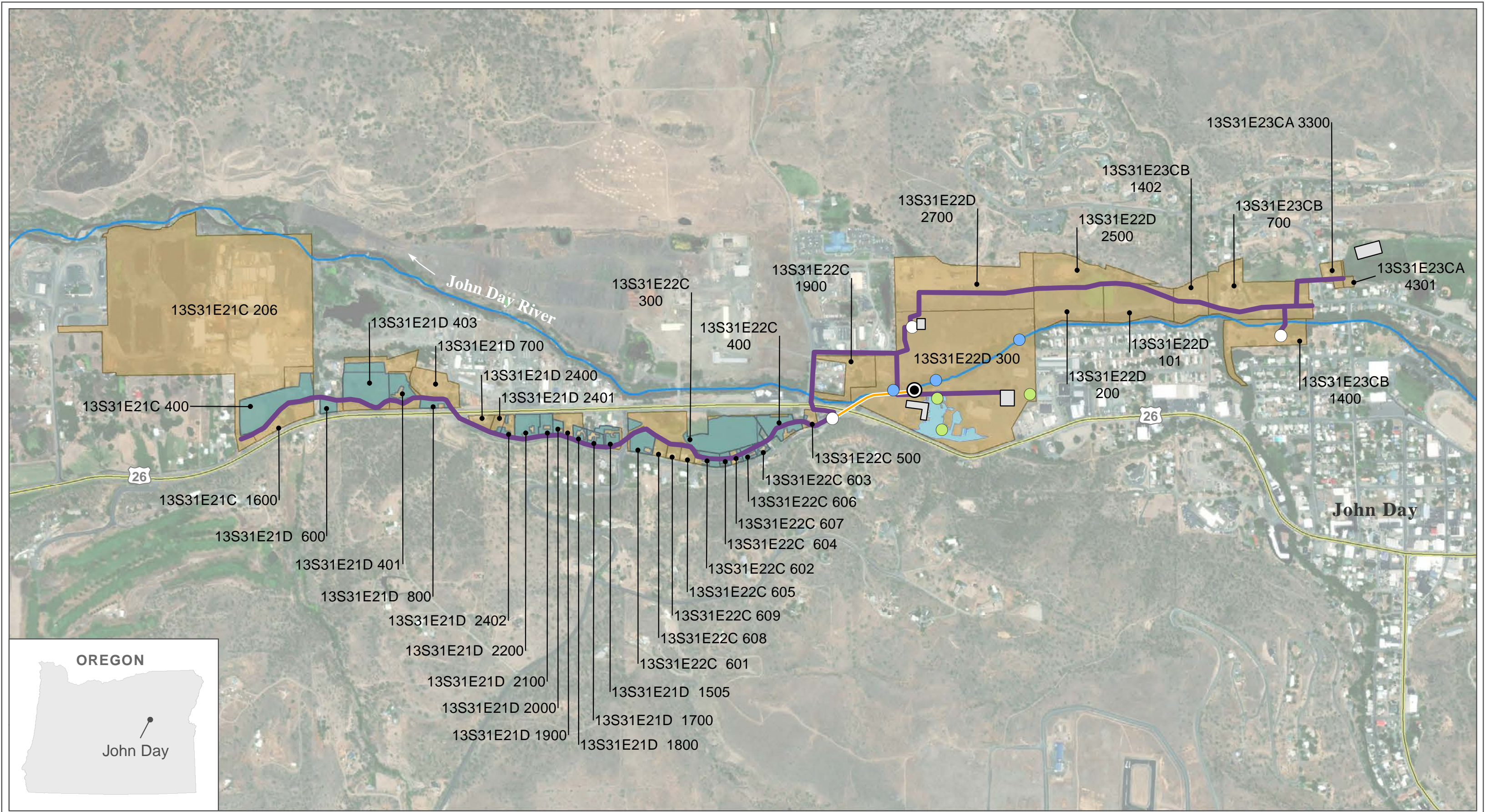
0 500 1,000 Feet

Lat Long: 44.422431, 118.970325

Credits: City of John Day, Grant County, OWRD, NHD, ODOT, Esri

\*\*\* This map was compiled by FCA as a visualization tool and is not intended for legal purposes. FCA is not liable for any damages caused by omissions or errors in the data displayed herein. Map document name and date: John Day Purple Pipe Option 2 Proj Area.mxd 4/23/2021 \*\*\*





**John Day Innovation Gateway  
Adaptive Water Reuse**  
Attachment 1.2b  
Tax Lots for Option 2

- Point of Diversion
- Luce Long Ditch (Piped Section)
- Option 2 Project Area
- Primary Irrigation POUs
- Tax Lots Associated with Option 2
- Surface Water Monitoring Sites
- Ground Water Monitoring Sites

0 500 1,000 Feet

Lat Long: 44.422431, 118.970325

Credits: City of John Day, Grant County, OWRD, NHD, ODOT, Esri

\*\*\* This map was compiled by FCA as a visualization tool and is not intended for legal purposes. FCA is not liable for any damages caused by omissions or errors in the data displayed herein. Map document name and date: John Day Purple Pipe Option 2 Tax Lots.mxd 4/25/2021 \*\*\*