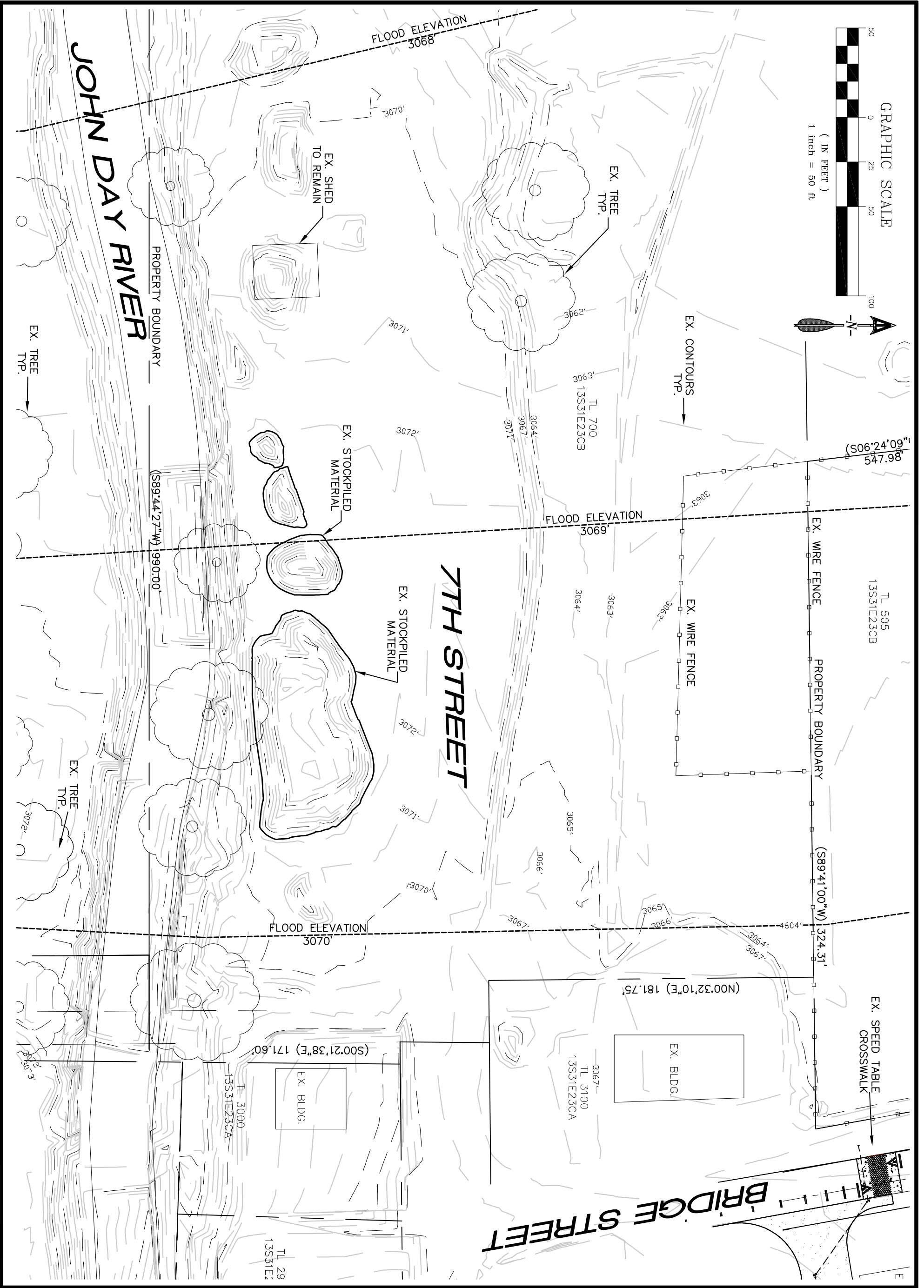
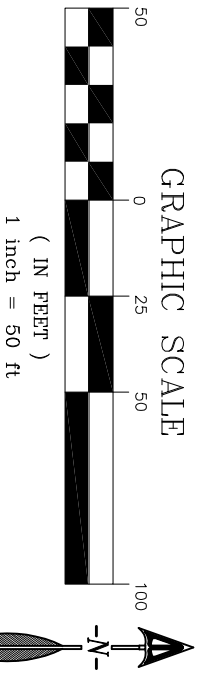


| | | | | | |
|---------------------------|--|--|--------------------------------|--|-----------------|
| OF 09 SHEETS 01 | SHEET JOB XX-XXX DRAWN GB SCALE NOTED DATE OCT. 2020 | SISUL ENGINEERING 158 E. MAIN STREET JOHN DAY, OREGON 97845 (541) 575-3777 | EXISTING SITE SOUTH | PHASE 1 HILL PARK PROJECT CITY OF JOHN DAY, OREGON | REVISIONS BY |
|---------------------------|--|--|--------------------------------|--|-----------------|



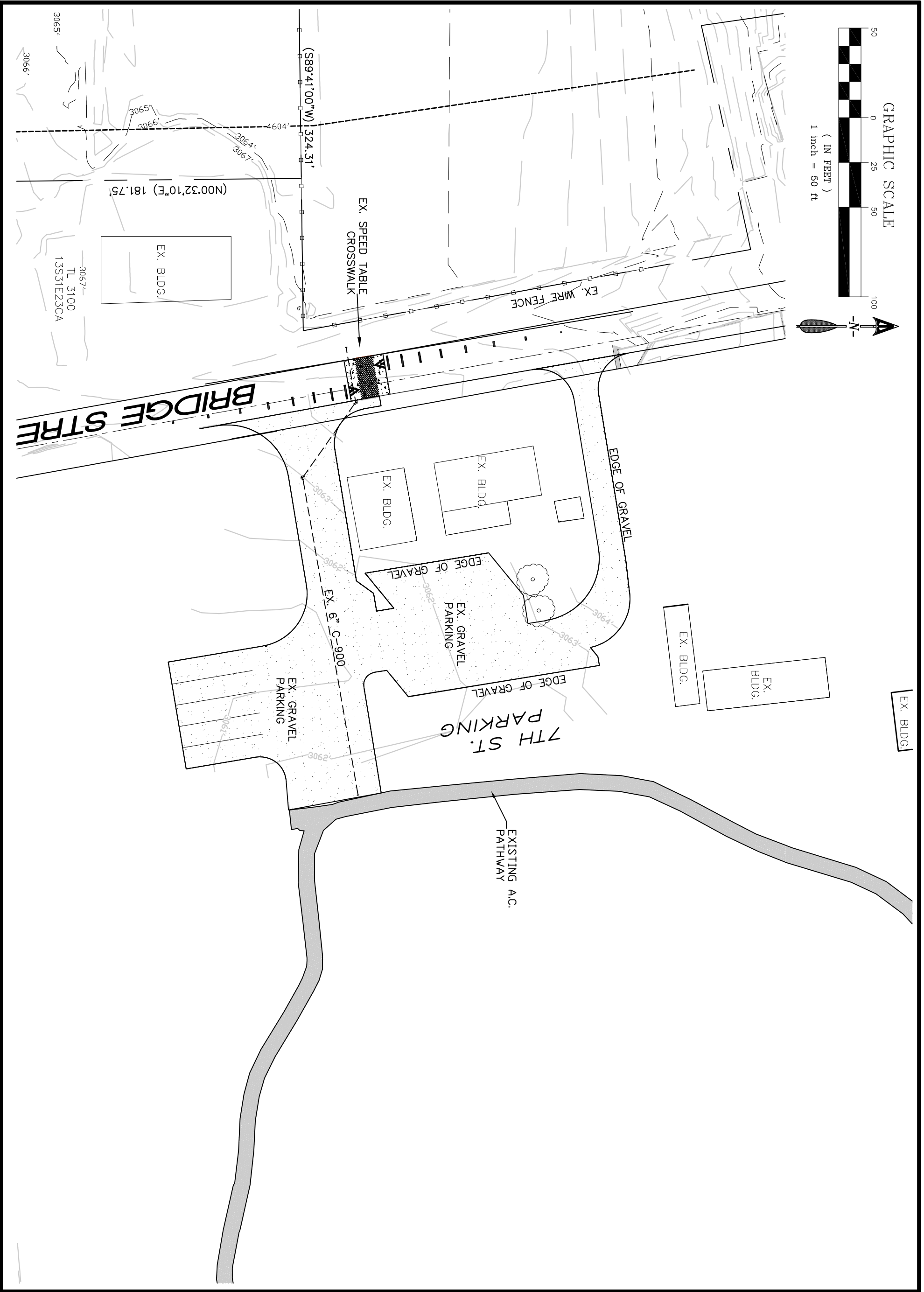
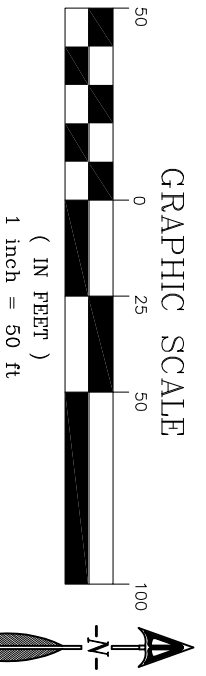
| REVISIONS | BY |
|-----------|----|
| | |
| | |
| | |
| | |

**PHASE 1
HILL PARK PROJECT**
CITY OF JOHN DAY, OREGON

**EXISTING SITE
NORTH**

SISUL ENGINEERING
158 E. MAIN STREET
JOHN DAY, OREGON 97845
(541) 575-3777

DATE OCT. 2020
SCALE NOTED
DRAWN GB
JOB XX-XXX
SHEET 02
OF 09 SHEETS



EX. BLDG.

REVISIONS BY

**PHASE 1
HILL PARK PROJECT**
CITY OF JOHN DAY, OREGON

**EXISTING SITE
7TH ST.**

SISUL ENGINEERING
158 E. MAIN STREET
JOHN DAY, OREGON 97845
(541) 575-3777

DATE OCT. 2020

SCALE NOTED

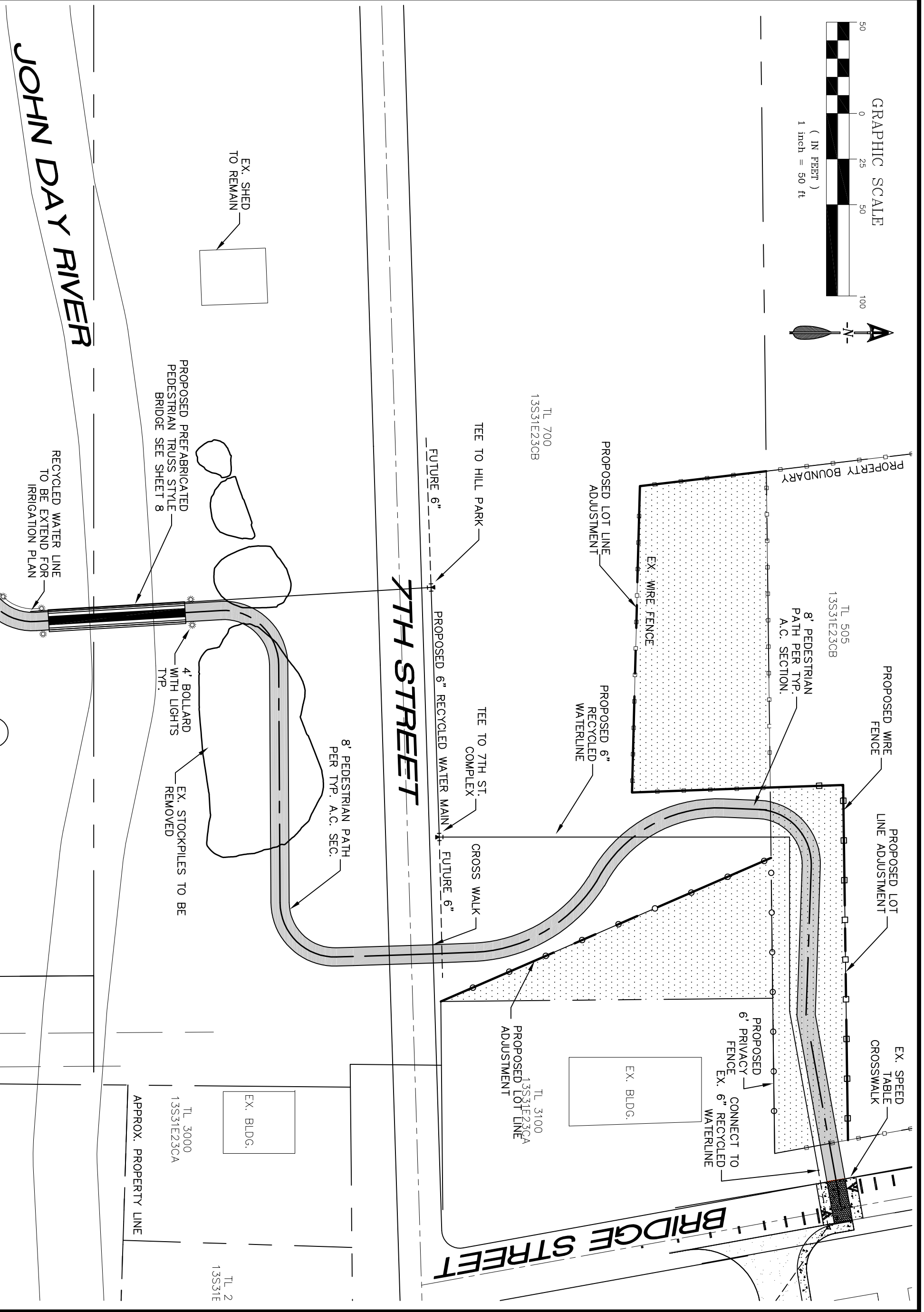
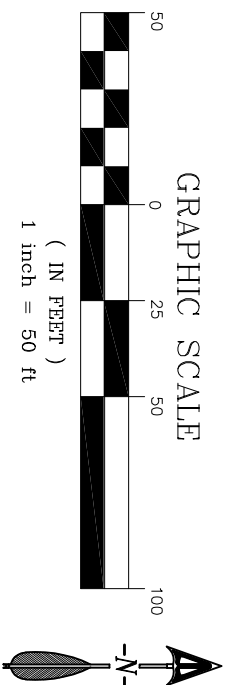
DRAWN GB

JOB XX-XXX

SHEET

03

OF 09 SHEETS



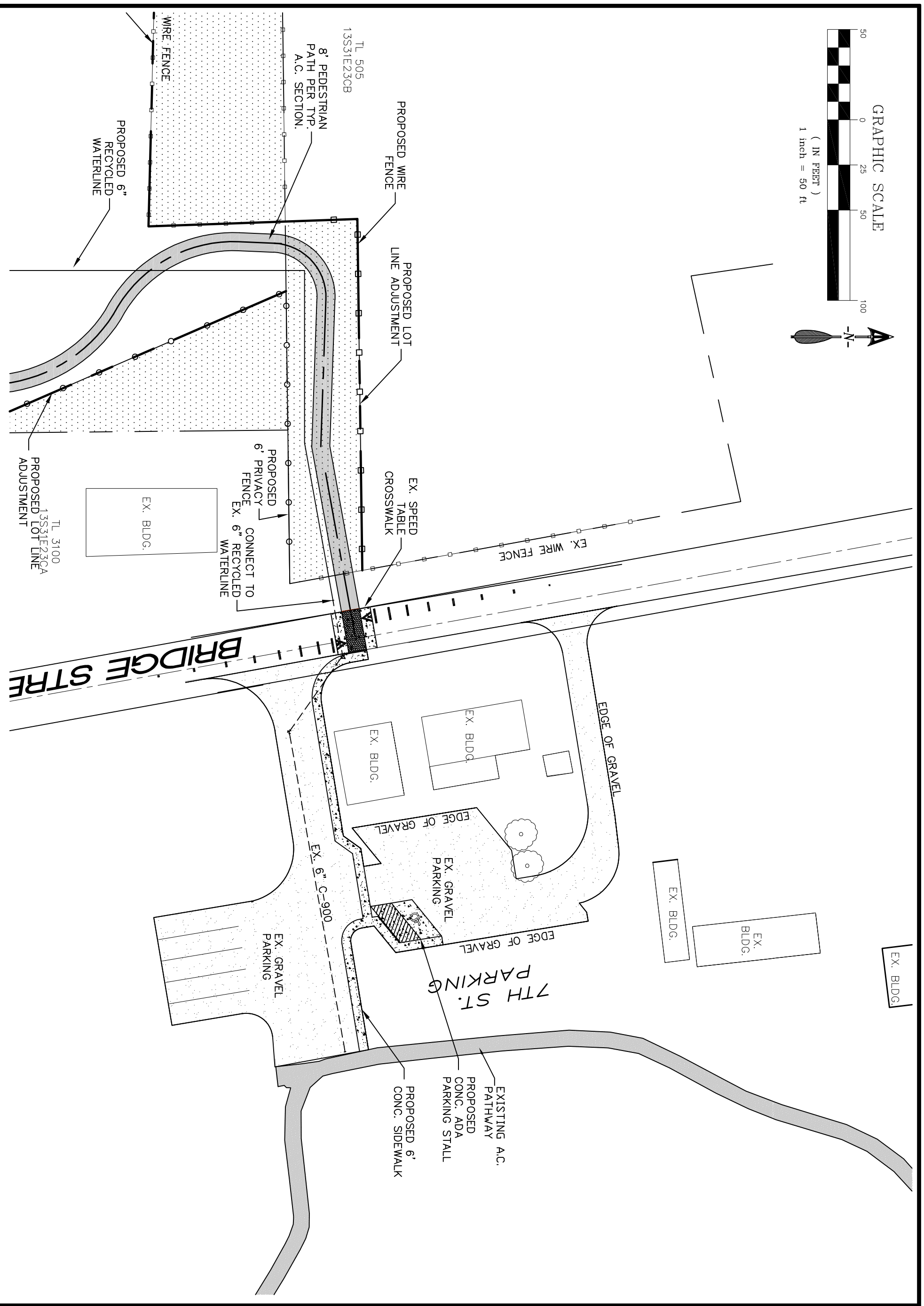
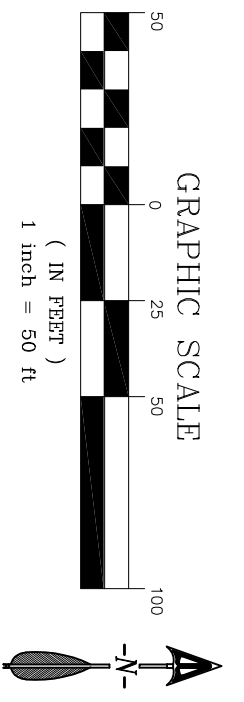
| REVISIONS | BY |
|-----------|----|
| | |
| | |
| | |
| | |

**PHASE 1
HILL PARK PROJECT**
CITY OF JOHN DAY, OREGON

**PROPOSED SITE
PLAN NORTH**

SISUL ENGINEERING
158 E. MAIN STREET
JOHN DAY, OREGON 97845
(541) 575-3777

DATE OCT. 2020
SCALE NTS
DRAWN GB
JOB XX-XXX
SHEET 05
OF 09 SHEETS



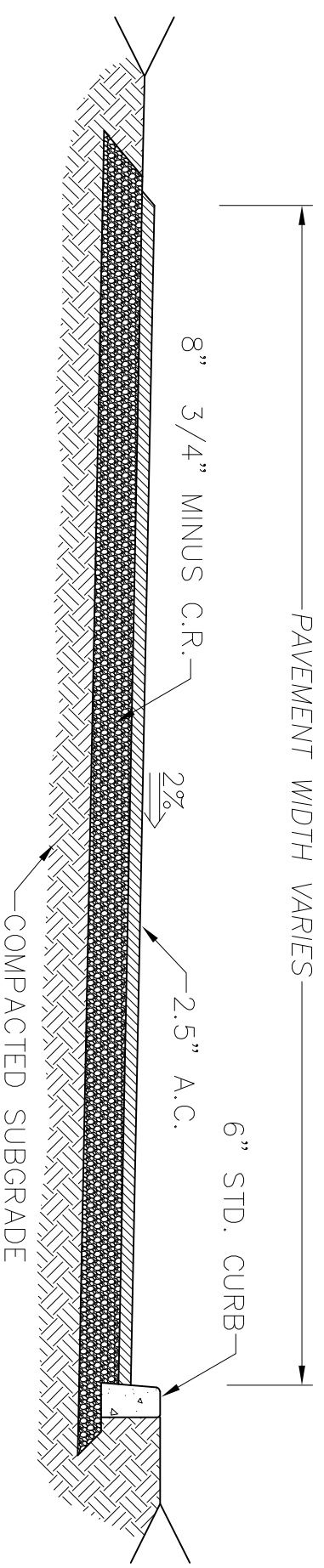
| REVISIONS | BY |
|-----------|----|
| | |
| | |
| | |
| | |

PHASE 1
HILL PARK PROJECT
 CITY OF JOHN DAY, OREGON

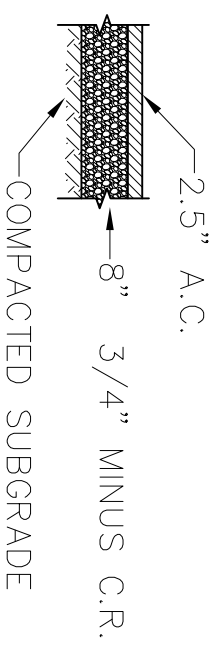
PROPOSED SITE
PLAN 7TH ST.

SISUL ENGINEERING
 158 E. MAIN STREET
 JOHN DAY, OREGON 97845
 (541) 575-3777

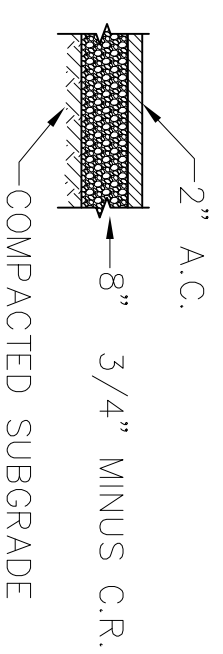
DATE OCT. 2020
 SCALE NTS
 DRAWN GB
 JOB XX-XXX
 SHEET
06
 OF 09 SHEETS



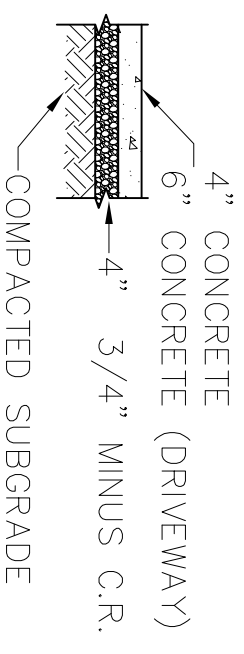
TYPICAL A.C. ACCESS SECTION
NTS



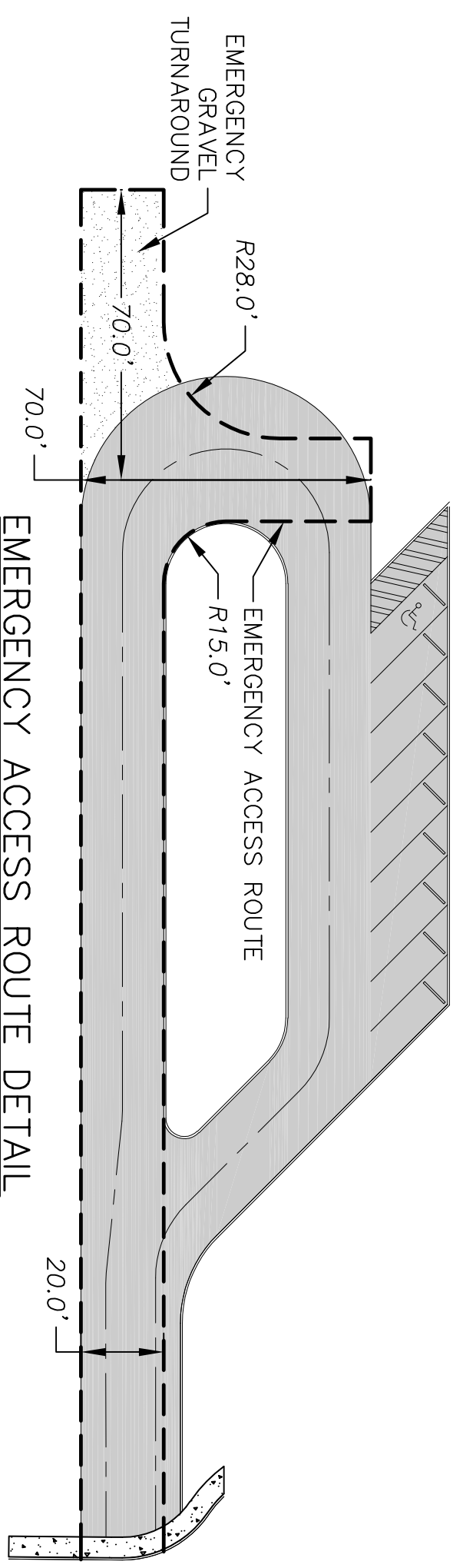
TYPICAL A.C. PARKING SECTION
NTS



TYPICAL A.C. TRAIL SECTION
NTS



TYPICAL CONC. SECTION
NTS



EMERGENCY ACCESS ROUTE DETAIL
NTS

| REVISIONS | BY |
|-----------|----|
| | |
| | |
| | |
| | |

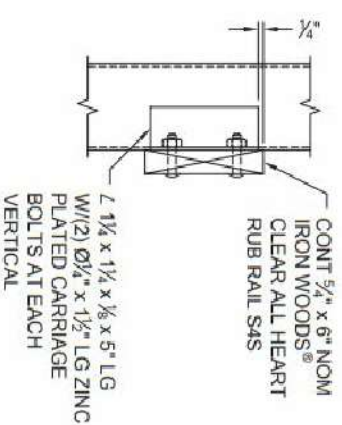
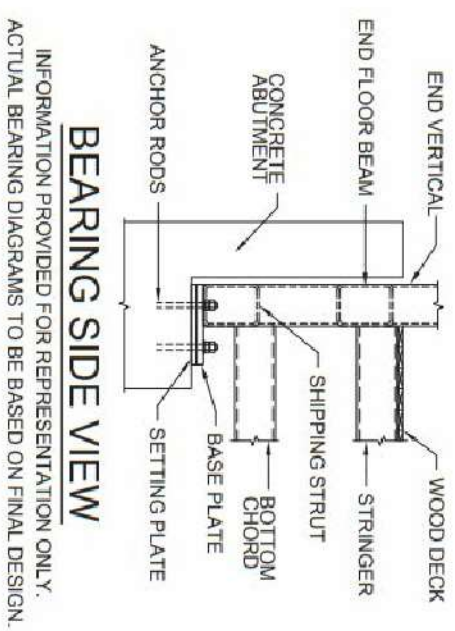
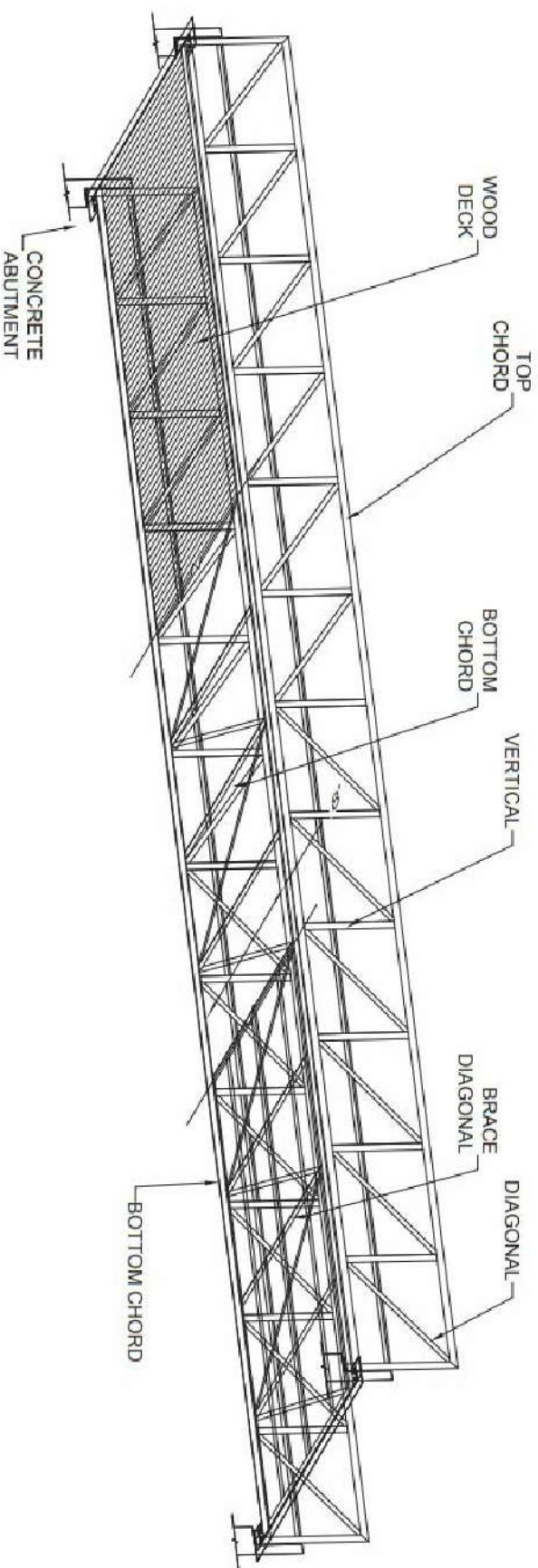
PHASE 1
HILL PARK PROJECT
CITY OF JOHN DAY, OREGON

STREET
DETAILS

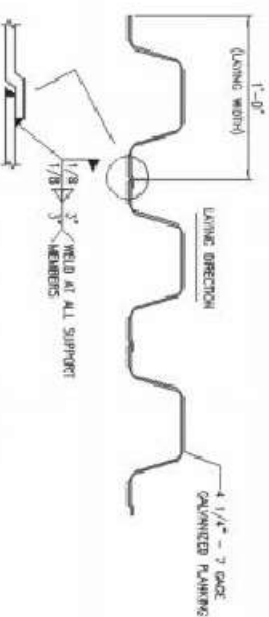
SISUL ENGINEERING
158 E. MAIN STREET
JOHN DAY, OREGON 97845
(541) 575-3777

DATE OCT. 2020
SCALE NTS
DRAWN GB
JOB XX-XXX
SHEET 07
OF 09 SHEETS

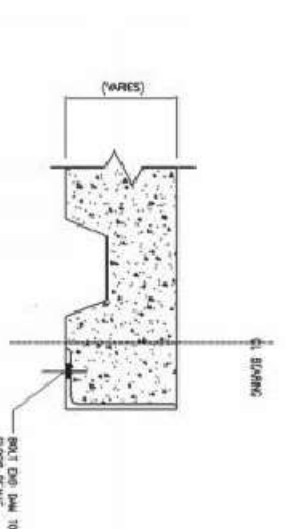
Pedestrian Truss Bridge Details



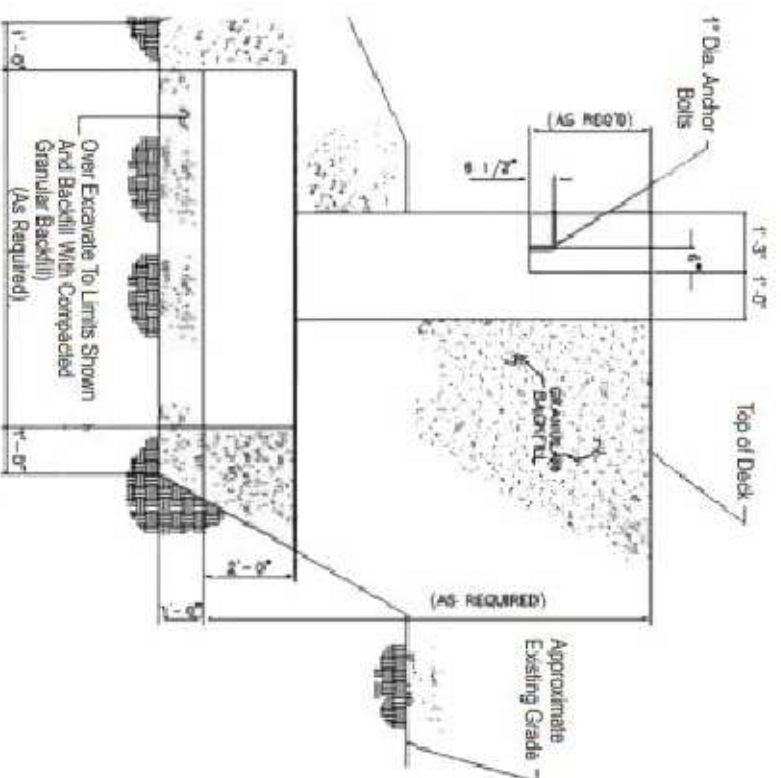
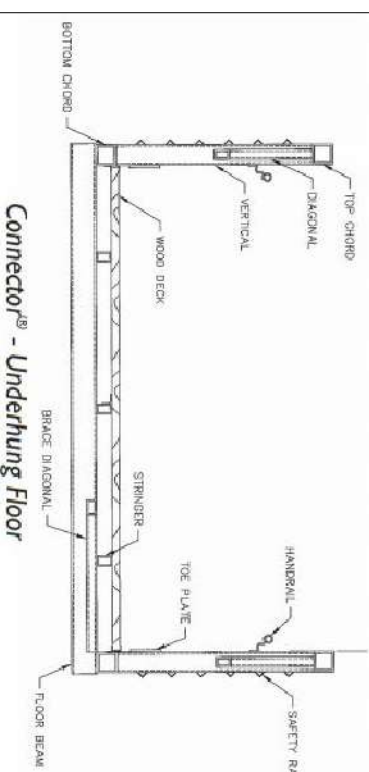
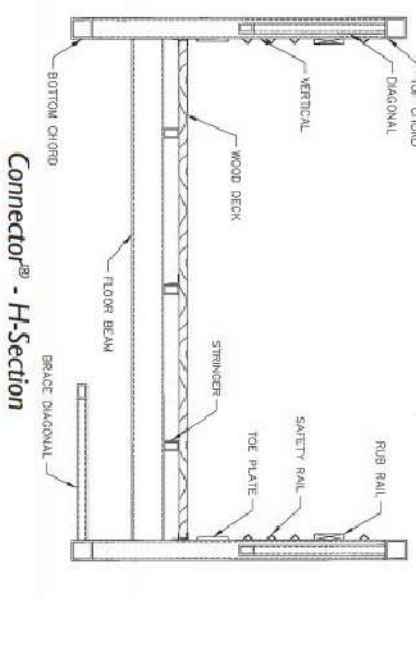
Asphalt Floor Connections



Concrete Deck Reinforcing



Section Views



Soil Supported

REVISIONS BY

| | |
|--|--|
| | |
| | |
| | |
| | |
| | |

PHASE 1
HILL PARK PROJECT
CITY OF JOHN DAY, OREGON

BRIDGE
DETAILS

SISUL ENGINEERING
158 E. MAIN STREET
JOHN DAY, OREGON 97845
(541) 575-3777

DATE OCT. 2020

SCALE NTS

DRAWN GB

JOB XX-XXX

SHEET 08

OF 09 SHEETS

