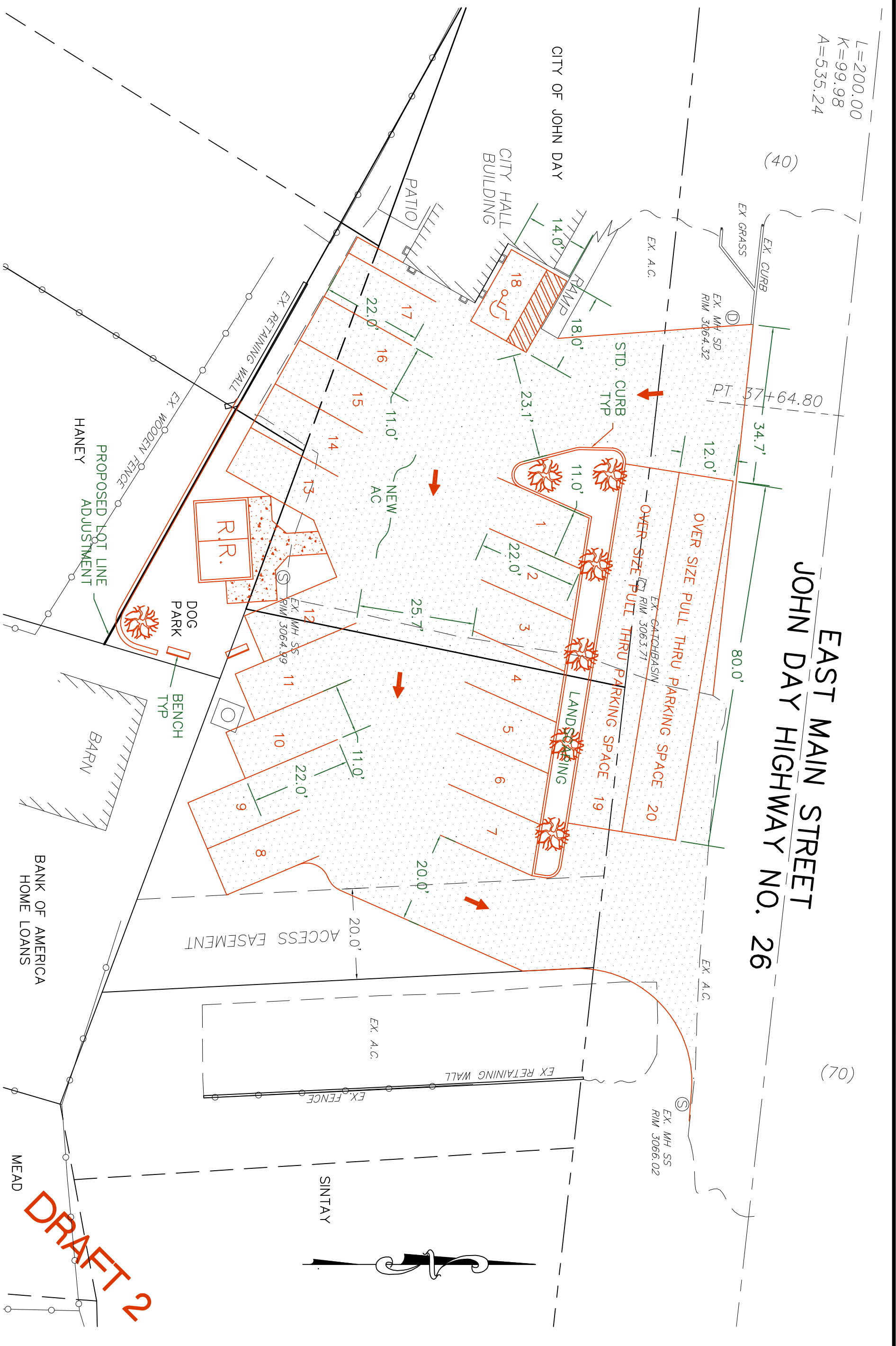


L=200.00  
 K=99.98  
 A=535.24

(40)

# EAST MAIN STREET JOHN DAY HIGHWAY NO. 26

(02)



**DRAFT 2**

REVISIONS	BY

## CITY PARKING LOT IMPROVEMENT PROJECT CITY OF JOHN DAY

## NEW CITY HALL PARKING LOT

**SISUL ENGINEERING**  
 158 E. MAIN STREET  
 JOHN DAY, OREGON 97845  
 (541) 575-3777

DATE: APRIL 2018  
 SCALE: NOTED  
 DRAWN: JH  
 JOB: 18-0XX  
 SHEET: 02  
 OF 02 SHEETS