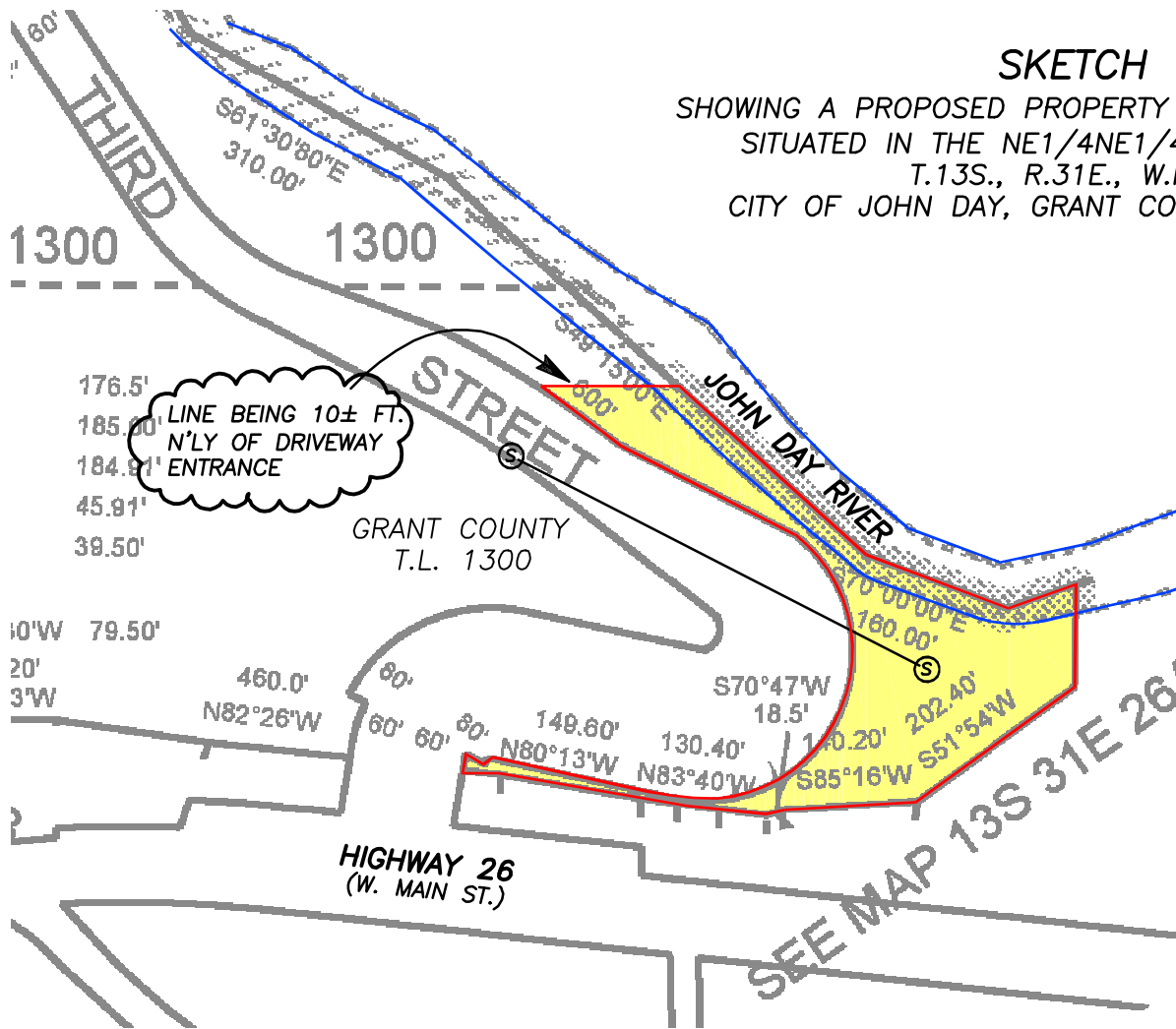


SKETCH

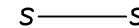
SHOWING A PROPOSED PROPERTY LINE ADJUSTMENT
SITUATED IN THE NE1/4NE1/4 SECTION 26
T.13S., R.31E., W.M.,
CITY OF JOHN DAY, GRANT COUNTY, OREGON



SCALE: 1" = 200'



PROPOSED PLA FROM GRANT COUNTY
TO THE CITY OF JOHN DAY
PORTION OF TAX LOT 1300, 1.7± AC.



EXISTING BURIED SEWER LINE



SEWER MANHOLE

PREPARED FOR: THE CITY OF JOHN DAY

PREPARED BY: BENCHMARK LAND SURVEYING, INC.
217 N. CANYON BLVD.
JOHN DAY, OR 97845
(541) 575-1251

OCTOBER 16, 2019

REGISTERED
PROFESSIONAL
LAND SURVEYOR

OREGON
JULY 9, 2002
MICHAEL C. SPRINGER
#70918

EXPIRES: 6/30/2020

NOTE:
NO SURVEY WAS CONDUCTED FOR THIS MAPPING
PROCESS. THE BOUNDARY SHOWN HEREON IS BASED
ON THE DEED RECORD AND THE ASSESSOR'S TAX
MAP. LINES AND AREAS SHOWN HEREON MAY
CHANGE UPON THE EXECUTION OF AN ACTUAL
SURVEY.