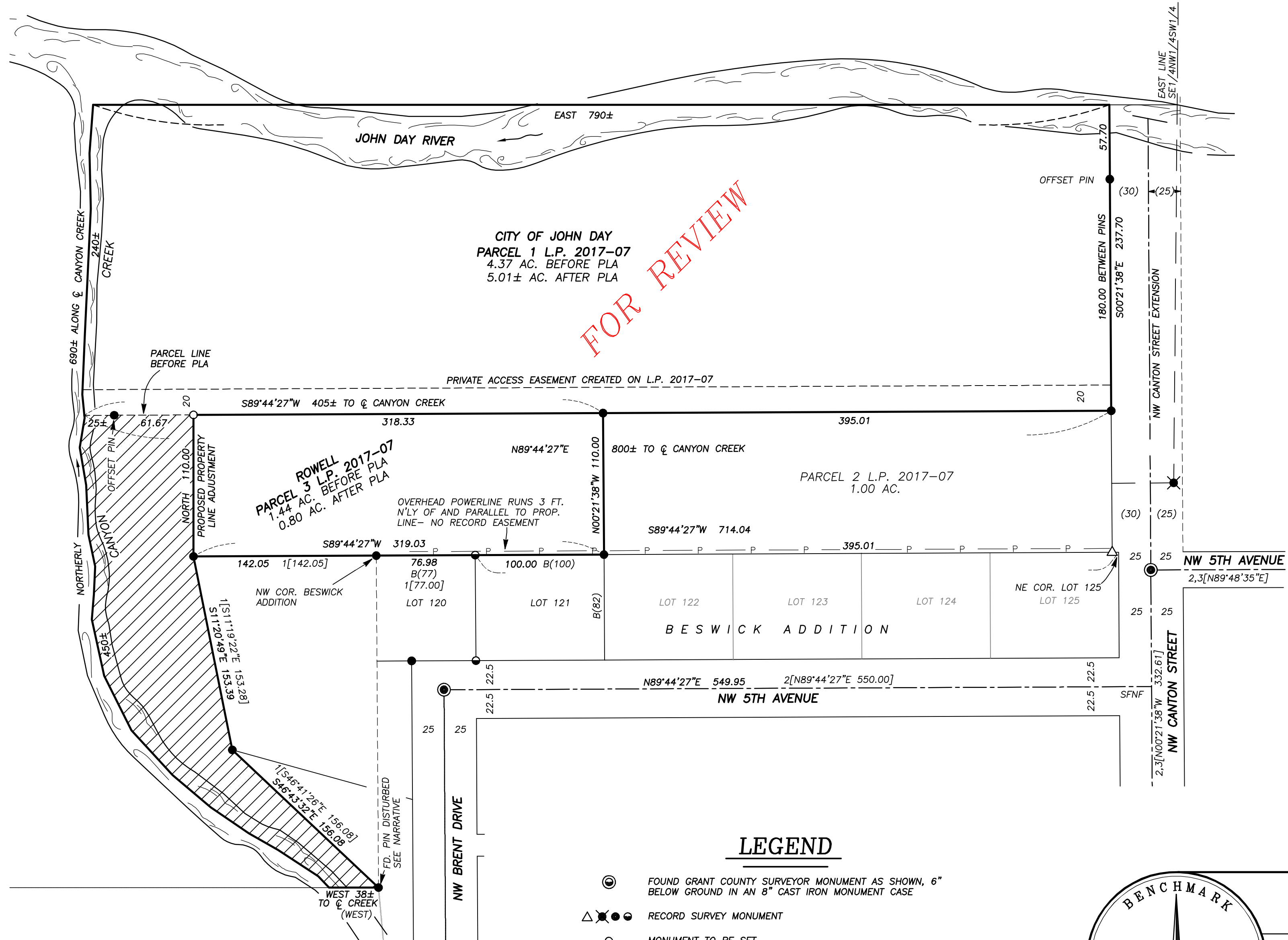


# PRELIMINARY PLAT FOR A PROPOSED PROPERTY LINE ADJUSTMENT

BETWEEN PARCEL 1 AND PARCEL 3 OF LAND PARTITION PLAT NO. 2017-07  
SITUATED IN THE SW1/4 SECTION 23, T.13S., R.31E., W.M.,  
CITY OF JOHN DAY, GRANT COUNTY, OREGON



## LEGEND

- FOUND GRANT COUNTY SURVEYOR MONUMENT AS SHOWN, 6" BELOW GROUND IN AN 8" CAST IRON MONUMENT CASE
- RECORD SURVEY MONUMENT
- MONUMENT TO BE SET
- 0.64 ACRES FROM PARCEL 3 (ROWELL) TO PARCEL 1 (CITY)

REGISTERED PROFESSIONAL LAND SURVEYOR

OREGON  
JULY 9, 2002  
MICHAEL C. SPRINGER  
#70918  
EXPIRES: 6/30/2020



**BENCHMARK LAND SURVEYING**  
217 N. CANYON BLVD. JOHN DAY, OREGON  
1207 DEWEY AVE., BAKER CITY, OREGON  
541-575-1251 ~ 541-523-5852

PROPOSED PROPERTY LINE ADJUSTMENT  
PARCELS 1 & 3, LAND PARTITION PLAT NO. 2017-07  
SITUATED IN THE SW1/4 SECTION 23, T.13S., R.31E., W.M.,  
CITY OF JOHN DAY, GRANT COUNTY, OREGON

|               |                              |           |
|---------------|------------------------------|-----------|
| SURVEYED FOR  | CITY OF JOHN DAY/JOHN ROWELL |           |
| SURVEYED BY   | MCS                          | 7/19/2017 |
| Scale: 1"=60' | Drawn by: MCS                |           |