

CLASS D LAND APPLICATION
(SEE FIGURE 4-3 FOR LOCATION)

CLASS A OR CLASS B
BENEFICIAL REUSE AT
MALHEUR LUMBER
LOG DECK WATERING OR
TORREFACTION

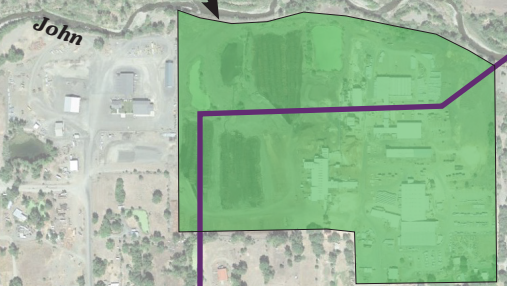
CITY'S EXISTING EFFLUENT DISPOSAL SITE
(PERCOLATION PONDS)

EXISTING WASTEWATER
TREATMENT FACILITIES

CLASS A DEEP WELL INJECTION

CLASS A LAND
APPLICATION AT
THE 7TH STREET
BASEBALL/SOFTBALL
COMPLEX

CLASS A LAND APPLICATION AT
THE PROPOSED GREENWAY



U.S. HWY. 395/26

Day

River

JOHN DAY

U.S. HWY. 26

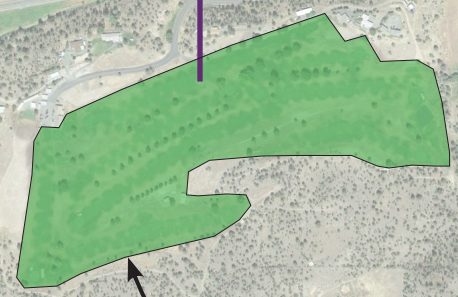
U.S. HWY. 395

POTENTIAL PURPLE
PIPE (RECLAIMED
WATER) NETWORK

CLASS A OR CLASS B
RECLAIMED WATER
POND AT THE PROPOSED
INNOVATION GATEWAY

CLASS A BENEFICIAL
REUSE AT THE
GREENHOUSES

CLASS B BENEFICIAL
REUSE AT POTENTIAL
HOTEL DEVELOPMENT



CLASS B LAND
APPLICATION AT THE
GOLF COURSE

To Mt. Vernon

To Prairie City

To Canyon City/Burns

T. 13 S., R. 31 E. W.M.
SCALE IN FEET
1000 0 1000

	<p>CITY OF JOHN DAY, OREGON WASTEWATER FACILITIES PLAN UPDATE POTENTIAL BENEFICIAL REUSE AND LAND APPLICATION SITES</p>	<p>FIGURE 4-8</p>
--	--	------------------------------