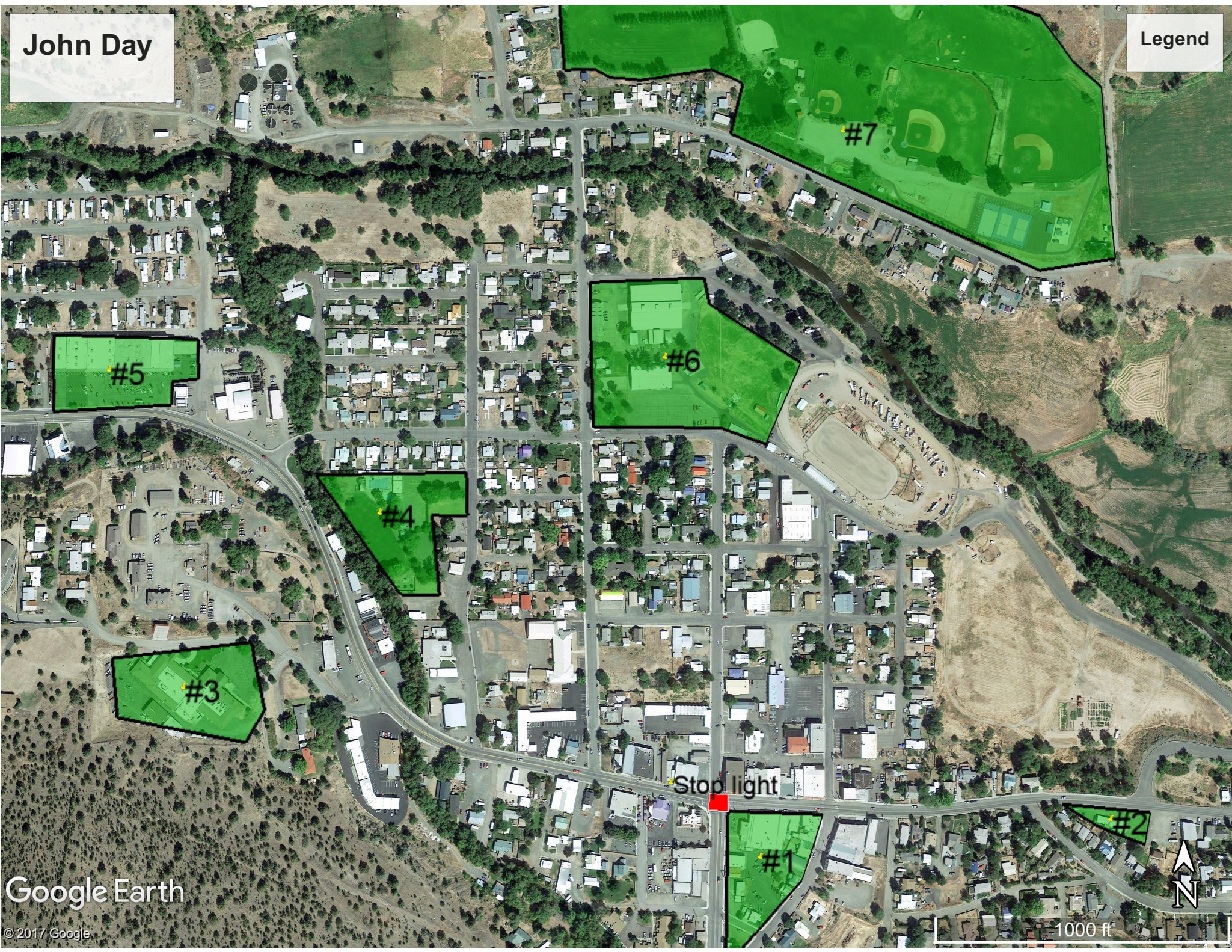


John Day

Legend



#5

#6

#7

#4

#3

#1

#2

Stop light

Google Earth

© 2017 Google

1000 ft



# John Day, OR Amenities Map Legend

**#1 Downtown area** (Main Street and S Canyon Blvd. ---- or near the stop light)

- Food vendors
- Portable toilet (located in parking lot behind Lens Drug and Subway)
- Hand wash station

**#2 Police station/City Hall** (450 E. Main Street)

- Portable toilet
- Hand wash station

**#3 Blue Mountain Hospital** (170 Ford Rd.)

**#4 City Park and Pool** (250 NW Canton St.)

- Public restrooms

**#5 Chester's Thriftway Grocery** (631 W Main St.)

**#6 Grant County Fairgrounds** (409 NW Bridge St.)

- Food vendors
- Public restrooms

**#7 7th Street Complex** (NE 7<sup>th</sup> Ave.)

- Community park, walking paths, play area, skate park, tennis courts
- Public restrooms