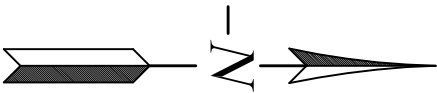
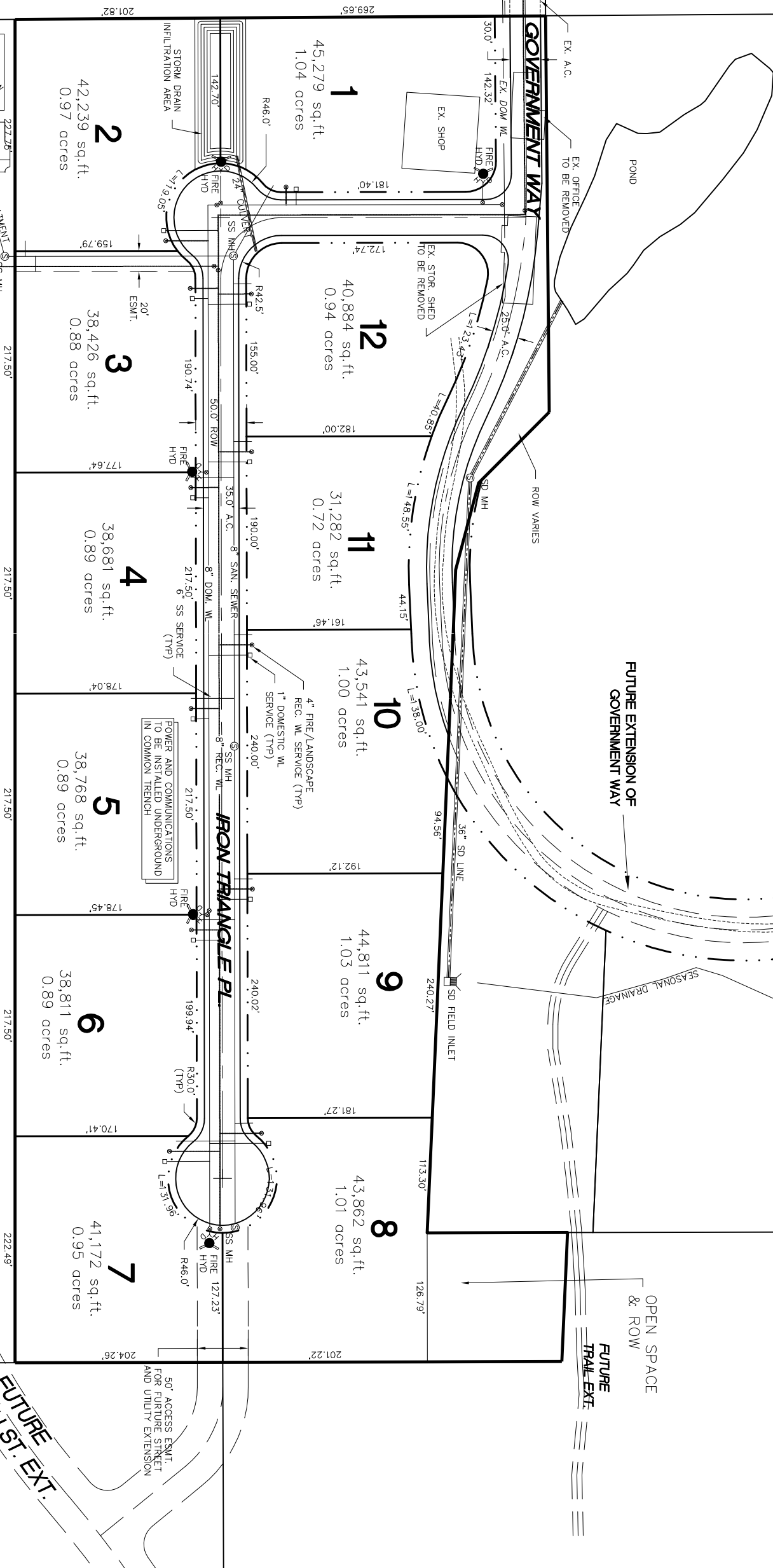


TYP STREET SECTION
NTS



SCALE: 1"=120'
PRINT ON 11x17 SHT.

PROPOSED IRONWOOD PHASE III



SITE
PLAN

PRELIMINARY PLAT
GATEWAY INDUSTRIAL PARK
CITY OF JOHN DAY

SISUL ENGINEERING
158 E. MAIN ST.
JOHN DAY, OREGON 97845
(541) 575-3777
DRAWING: GATEWAY INDUSTRIAL PARK.dwg

REVISIONS	BY

DATE NOV 2020
SCALE NOTED

DRAWN JH

JOB 19--

SHEET

02

OF 02 SHEETS

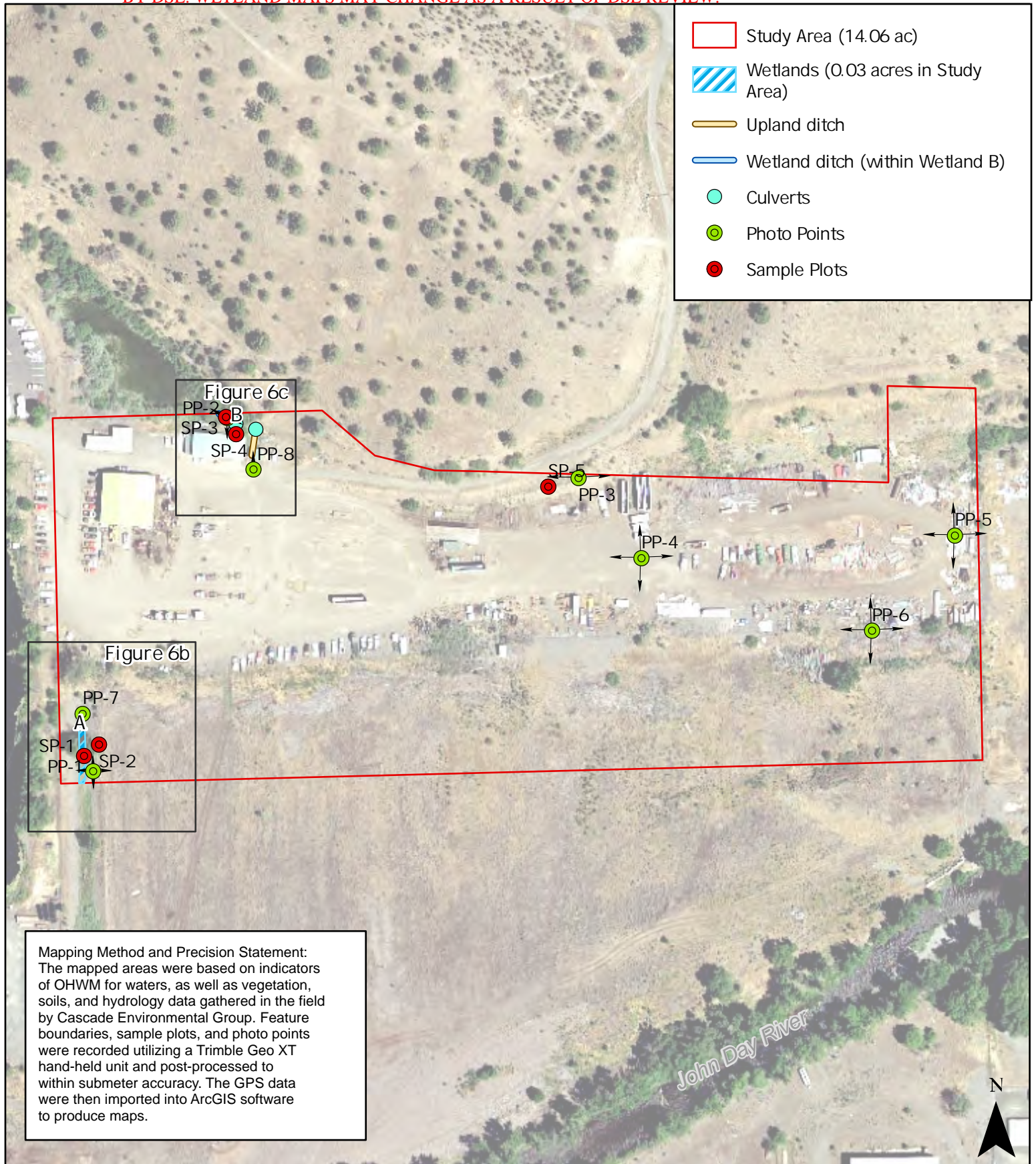


Figure 6a. Wetlands and Other Waters Boundaries Index Map

Date: 8/18/2020
 Data Source: OSIP, 2017

Iron Triangle Site Wetland Delineation