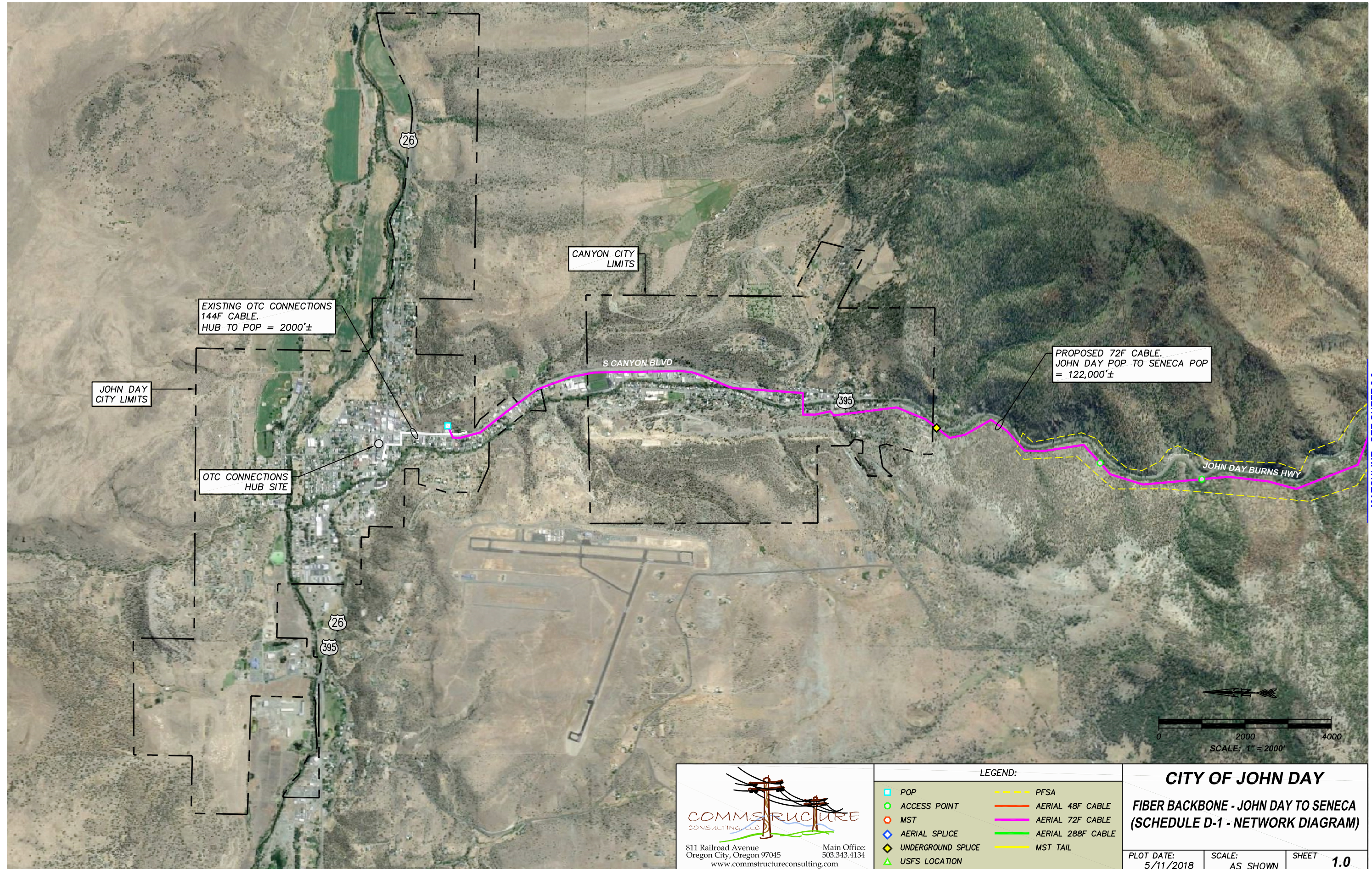


Plot Date: 11 May 2018, 9:20am By User: Tom  
 Drawing Name: Z:\CITY OF JOHN DAY\CAD\JD-DECO.DWG Layout (If Any): PLAN 1



MATCHLINE - SEE SHEET 2.0

**COMMS** *STRUCTURE*  
CONSULTING, LLC

811 Railroad Avenue  
Oregon City, Oregon 97045  
www.commsstructureconsulting.com

Main Office:  
503.343.4134

**LEGEND:**

■ POP	--- PFSA
● ACCESS POINT	— AERIAL 48F CABLE
○ MST	— AERIAL 72F CABLE
◇ AERIAL SPLICE	— AERIAL 288F CABLE
◆ UNDERGROUND SPLICE	— MST TAIL
▲ USFS LOCATION	

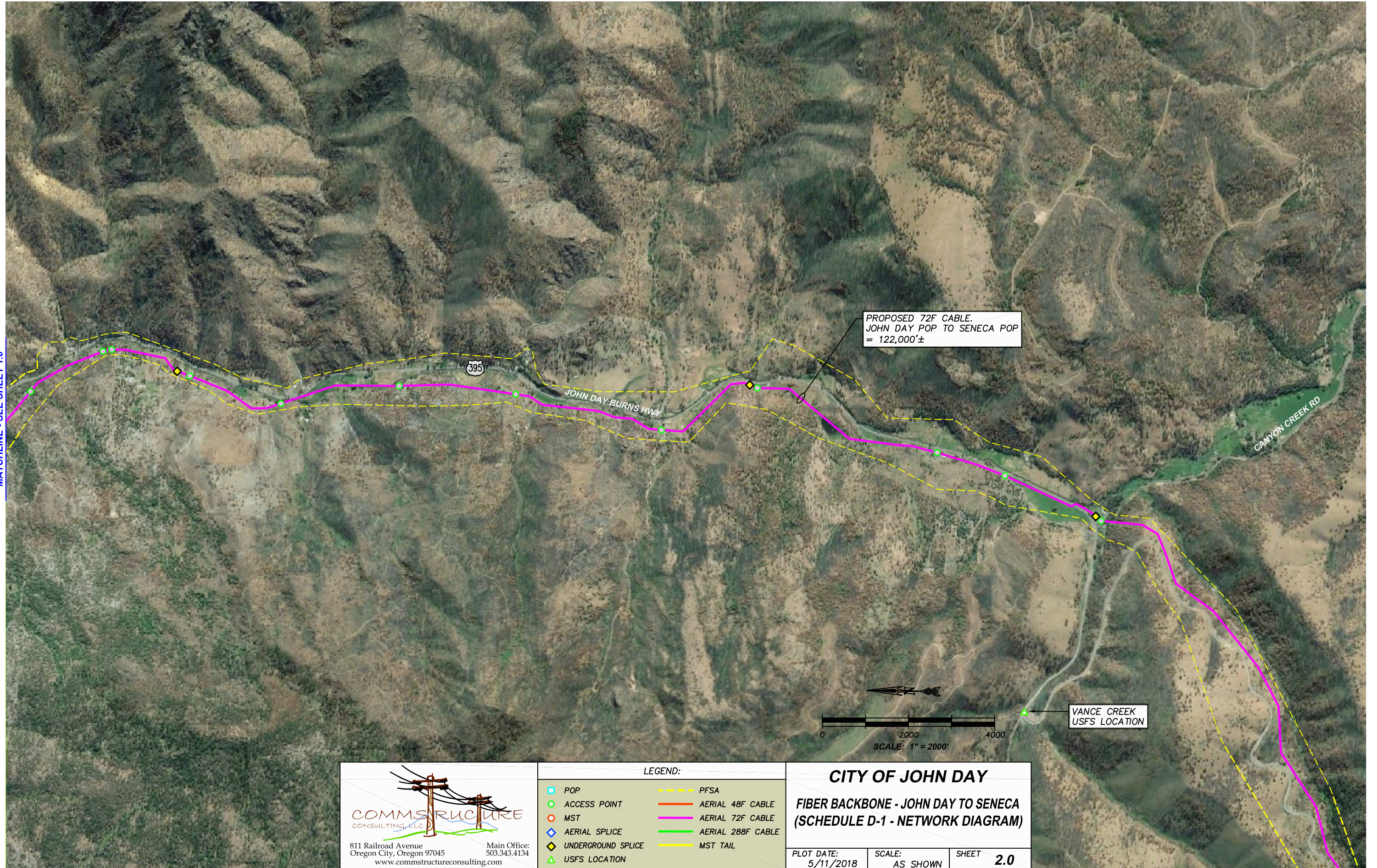
**CITY OF JOHN DAY**

**FIBER BACKBONE - JOHN DAY TO SENECA  
(SCHEDULE D-1 - NETWORK DIAGRAM)**

PLOT DATE: 5/11/2018	SCALE: AS SHOWN	SHEET <b>1.0</b>
-------------------------	--------------------	---------------------

Plot Date: 11 May 2018, 9:20am By User: Tom  
 Drawing Name: Z:\CITY OF JOHN DAY\CAD\JD-DECO.DWG Layout (If Any): PLAN 2

MATCHLINE - SEE SHEET 1.0



**COMMSTRUCTURE**  
 CONSULTING, LLC

811 Railroad Avenue  
 Oregon City, Oregon 97045  
 www.commstructureconsulting.com

Main Office:  
 503.343.4134

**LEGEND:**

■ POP	--- PFSA
● ACCESS POINT	— AERIAL 48F CABLE
○ MST	— AERIAL 72F CABLE
◆ AERIAL SPLICE	— AERIAL 288F CABLE
◇ UNDERGROUND SPLICE	--- MST TAIL
▲ USFS LOCATION	

**CITY OF JOHN DAY**

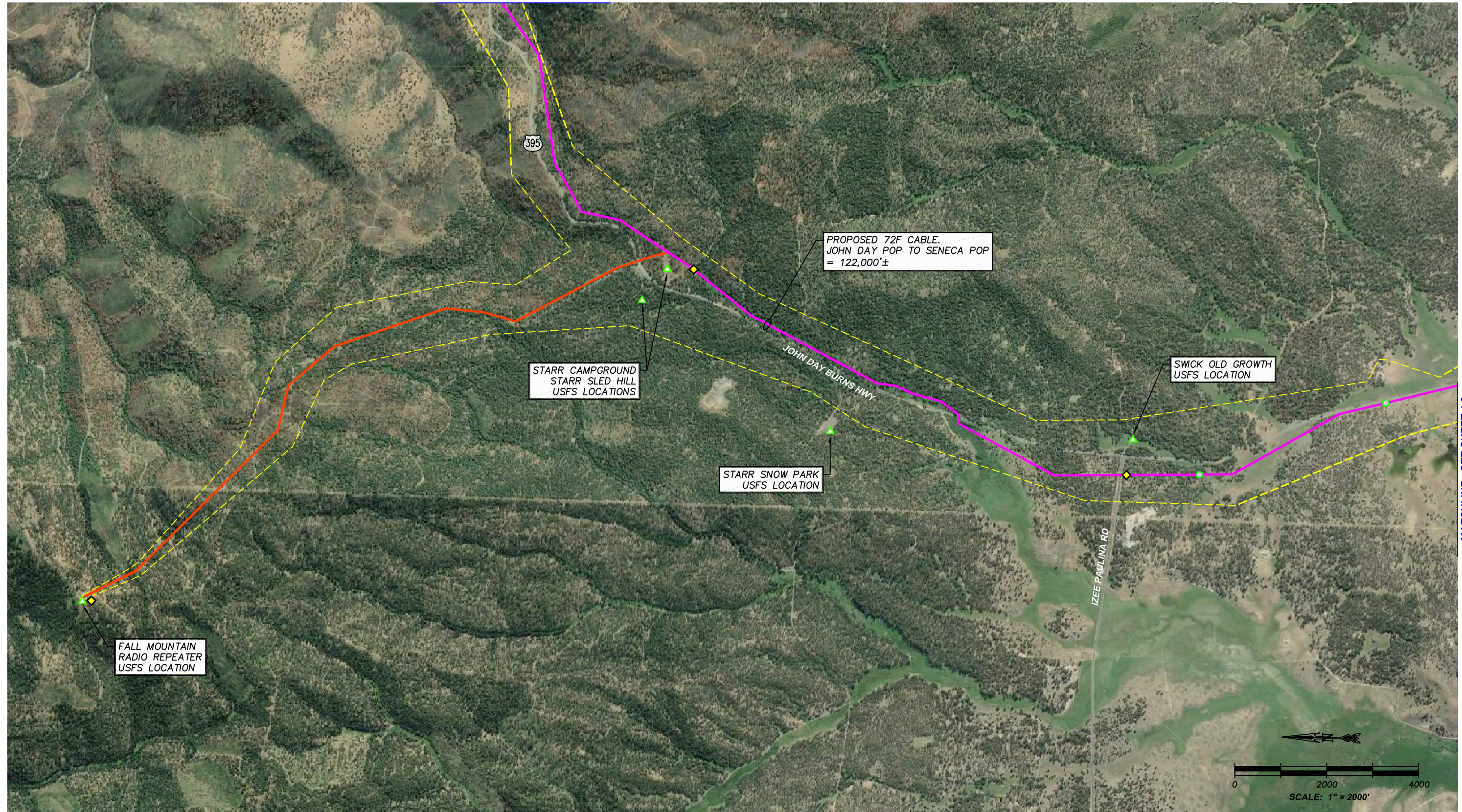
**FIBER BACKBONE - JOHN DAY TO SENECA  
 (SCHEDULE D-1 - NETWORK DIAGRAM)**

PLOT DATE: 5/11/2018	SCALE: AS SHOWN	SHEET <b>2.0</b>
-------------------------	--------------------	---------------------

MATCHLINE - SEE SHEET 3.0

MATCHLINE - SEE SHEET 2.0

MATCHLINE - SEE SHEET 4.0



PROPOSED 72F CABLE.  
JOHN DAY POP TO SENECA POP  
= 122,000'±

STARR CAMPGROUND  
STARR SLED HILL  
USFS LOCATIONS

SWICK OLD GROWTH  
USFS LOCATION

STARR SNOW PARK  
USFS LOCATION

FALL MOUNTAIN  
RADIO REPEATER  
USFS LOCATION

**COMMS** *STRUCTURE*  
CONSULTING, LLC

811 Railroad Avenue  
Oregon City, Oregon 97045  
www.commsstructureconsulting.com

Main Office:  
503.343.4134

**LEGEND:**

■ POP	--- PFSA
● ACCESS POINT	— AERIAL 48F CABLE
○ MST	— AERIAL 72F CABLE
◇ AERIAL SPLICE	— AERIAL 288F CABLE
◆ UNDERGROUND SPLICE	— MST TAIL
▲ USFS LOCATION	

**CITY OF JOHN DAY**

**FIBER BACKBONE - JOHN DAY TO SENECA  
(SCHEDULE D-1 - NETWORK DIAGRAM)**

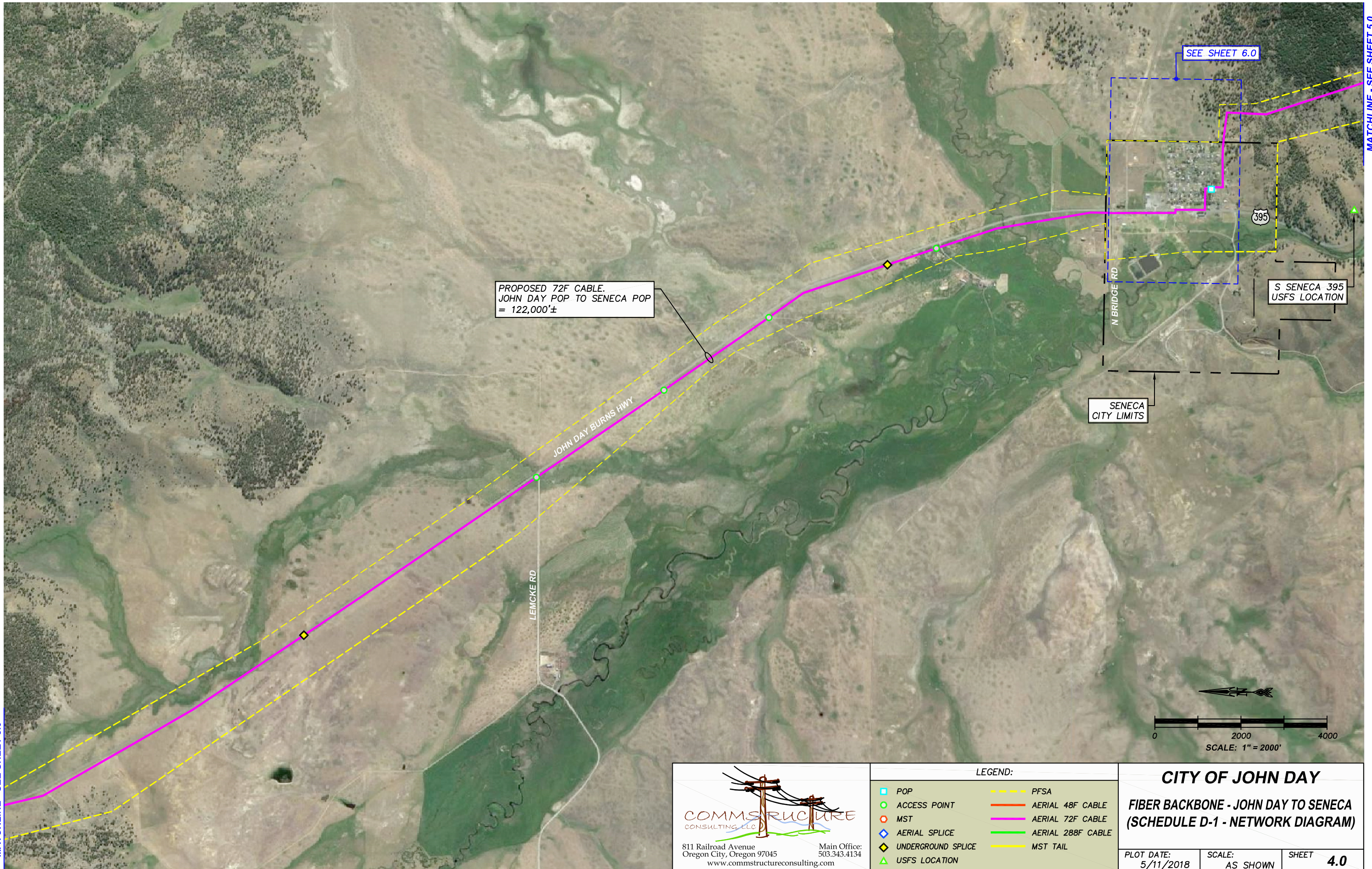
PLOT DATE: 5/11/2018	SCALE: AS SHOWN	SHEET <b>3.0</b>
-------------------------	--------------------	---------------------

Plot Date: 11 May 2018, 9:28am By User: Tom  
Drawing Name: Z:\CITY OF JOHN DAY\CAD\JD-DECO.DWG Layout (If Any): PLAN 3

Plot Date: 11 May 2018, 9:28am By User: Tom  
 Drawing Name: Z:\CITY OF JOHN DAY\CAD\JD-DECO.DWG Layout (If Any): PLAN 4

MATCHLINE - SEE SHEET 3.0

MATCHLINE - SEE SHEET 5.0



PROPOSED 72F CABLE.  
 JOHN DAY POP TO SENECA POP  
 = 122,000±

SEE SHEET 6.0

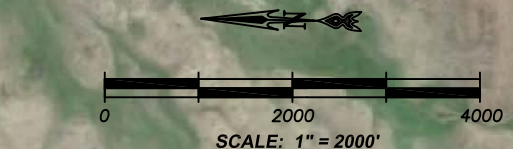
395

S SENECA 395  
 USFS LOCATION

SENECA  
 CITY LIMITS

LEMCKE RD

JOHN DAY BURNS HWY



**COMMS** *STRUCTURE*  
 CONSULTING, LLC

811 Railroad Avenue  
 Oregon City, Oregon 97045  
 www.commsstructureconsulting.com

Main Office:  
 503.343.4134

LEGEND:	
□ POP	--- PFSA
● ACCESS POINT	— AERIAL 48F CABLE
○ MST	— AERIAL 72F CABLE
◇ AERIAL SPLICE	— AERIAL 288F CABLE
◆ UNDERGROUND SPLICE	— MST TAIL
▲ USFS LOCATION	

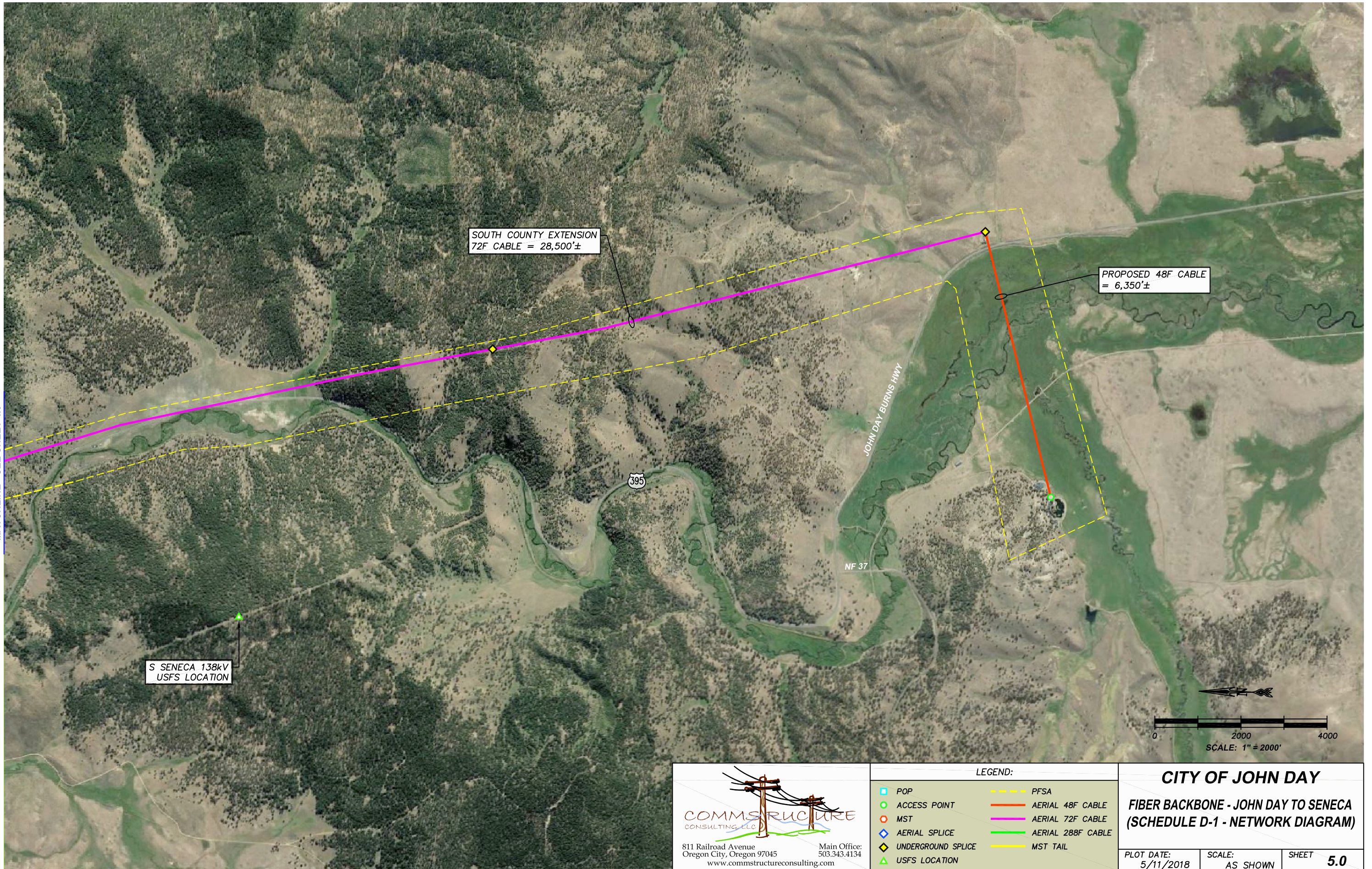
**CITY OF JOHN DAY**

**FIBER BACKBONE - JOHN DAY TO SENECA**  
**(SCHEDULE D-1 - NETWORK DIAGRAM)**

PLOT DATE: 5/11/2018	SCALE: AS SHOWN	SHEET <b>4.0</b>
-------------------------	--------------------	---------------------

Plot Date: 11 May 2018, 9:33am By User: Tom  
 Drawing Name: Z:\CITY OF JOHN DAY\CAD\JD-DECO.DWG Layout (If Any): PLAN 5

MATCHLINE - SEE SHEET 4.0



S SENECA 138kV  
USFS LOCATION

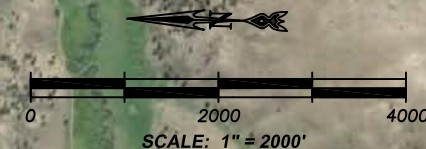
SOUTH COUNTY EXTENSION  
72F CABLE = 28,500'±

PROPOSED 48F CABLE  
= 6,350'±

JOHN DAY BURNS HWY

NF 37

395



**COMMS** *STRUCTURE*  
CONSULTING, LLC

811 Railroad Avenue  
Oregon City, Oregon 97045  
www.commsstructureconsulting.com

Main Office:  
503.343.4134

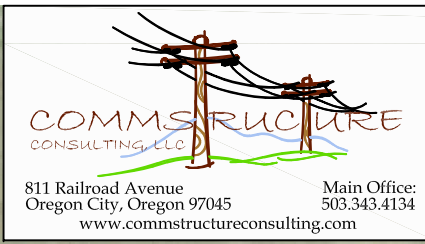
**LEGEND:**

■ POP	--- PFSA
● ACCESS POINT	— AERIAL 48F CABLE
○ MST	— AERIAL 72F CABLE
◇ AERIAL SPLICE	— AERIAL 288F CABLE
◆ UNDERGROUND SPLICE	— MST TAIL
▲ USFS LOCATION	

**CITY OF JOHN DAY**

**FIBER BACKBONE - JOHN DAY TO SENECA  
(SCHEDULE D-1 - NETWORK DIAGRAM)**

PLOT DATE: 5/11/2018	SCALE: AS SHOWN	SHEET <b>5.0</b>
-------------------------	--------------------	---------------------



811 Railroad Avenue  
Oregon City, Oregon 97045  
www.commsstructureconsulting.com

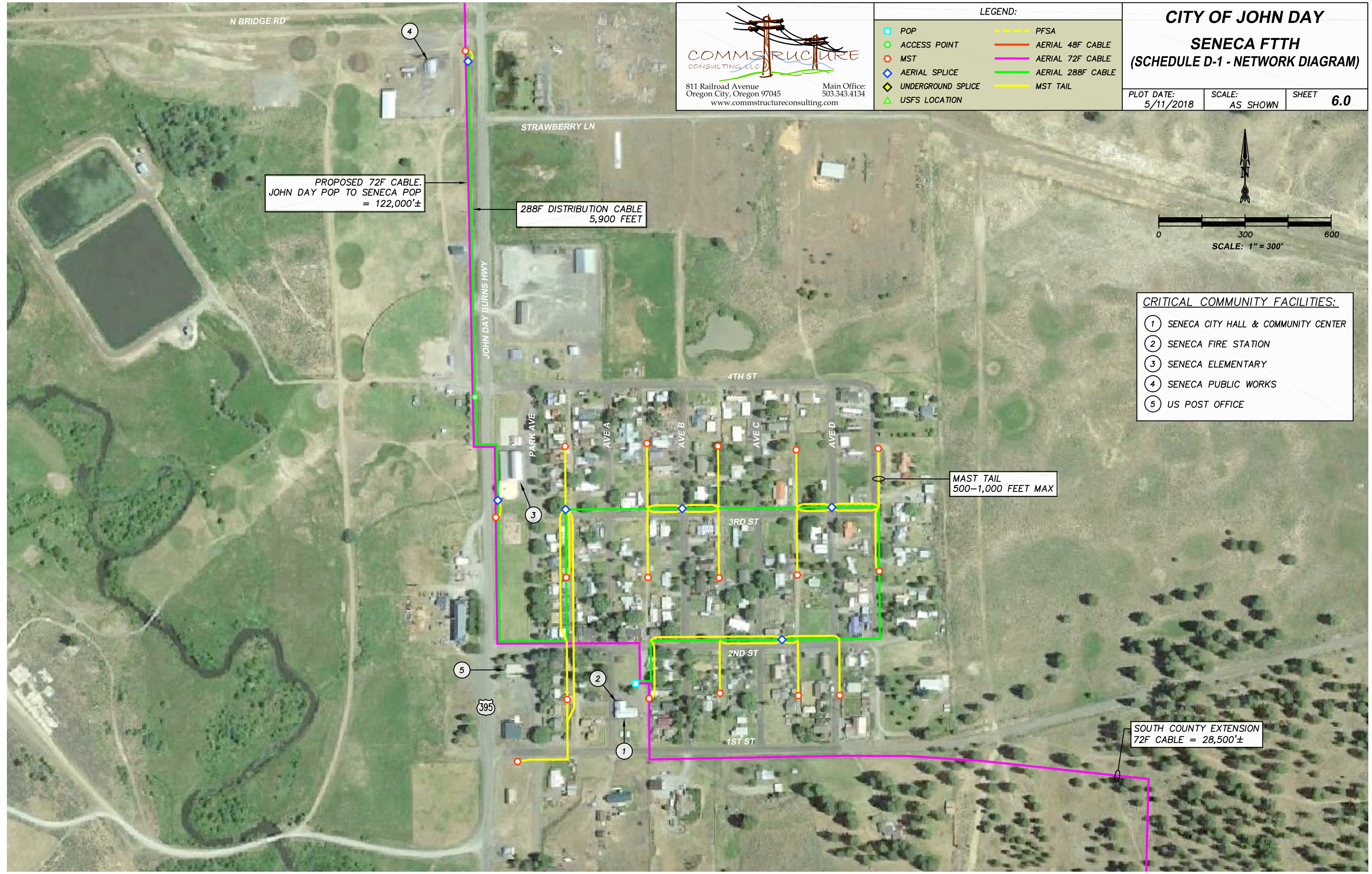
Main Office:  
503.343.4134

LEGEND:

POP	PFSA
ACCESS POINT	AERIAL 48F CABLE
MST	AERIAL 72F CABLE
AERIAL SPLICE	AERIAL 288F CABLE
UNDERGROUND SPLICE	MST TAIL
USFS LOCATION	

**CITY OF JOHN DAY**  
**SENECA FTTH**  
**(SCHEDULE D-1 - NETWORK DIAGRAM)**

PLOT DATE: 5/11/2018    SCALE: AS SHOWN    SHEET **6.0**

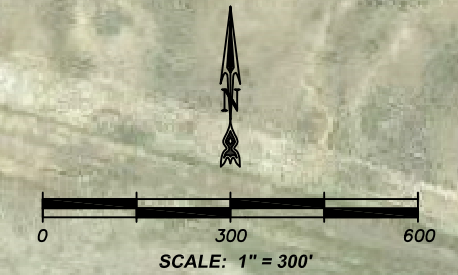


PROPOSED 72F CABLE,  
JOHN DAY POP TO SENECA POP  
= 122,000'±

288F DISTRIBUTION CABLE  
5,900 FEET

MAST TAIL  
500-1,000 FEET MAX

SOUTH COUNTY EXTENSION  
72F CABLE = 28,500'±



- CRITICAL COMMUNITY FACILITIES:**
- ① SENECA CITY HALL & COMMUNITY CENTER
  - ② SENECA FIRE STATION
  - ③ SENECA ELEMENTARY
  - ④ SENECA PUBLIC WORKS
  - ⑤ US POST OFFICE